

PORTAPOWER

www.portapower.com

EN ISO13849-1 Compliant



Yik Lik Energy



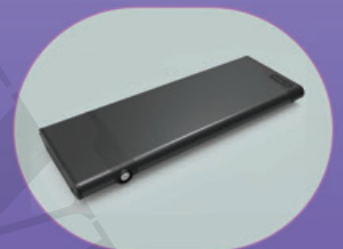
PANASONIC



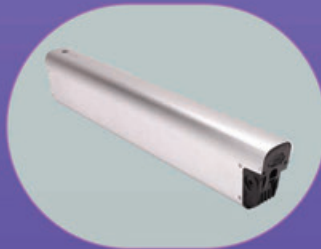
LG



SAMSUNG 18650



SAMSUNG 21700



*All the brand names mentioned therein are registered trademarks of the respective companies.

2020 Version

ABOUT US

PortaPower was reorganized in 1995 from the former Megasonic (founded in 1991).

PortaPower is an experienced and reputable manufacturer and exporter of Li-ion, Li-Polymer, Ni-Cd and Ni-MH rechargeable battery packs and related products. **PortaPower** provides total energy solution for local and overseas OEM/ODM customers on all rechargeable battery packs of different chemistries.

PortaPower operates state-of-the-art manufacturing facilities based in China. These are the edges of our OEM/ODM business.

With strictest quality assurance policy, **PortaPower** ensures the highest standard in all production stages, offering high-quality battery products, with a focused goal of helping and reserving customers' request. To conclude, **PortaPower** is committed to offering innovative batteries and energy solutions that would provide profitable and value-added service of the highest quality to its customers.

To further enhance our quality service, **PortaPower** now provides a **2-Year warranty** to all of our products.





After-sales Service Centre in Germany

We believe client satisfaction comes not only from quality products but also our commitment to bring confidence to both before and after sales. Therefore, a service centre has been set up in Berlin to provide our client with the most timely and efficient technical support.



MEET  NEEDS

CONTENTS

04 *Electric Bicycle Battery Types*



57 *Electric Motorcycle Battery Types*



61 *Electric Wheelchair Battery Types*



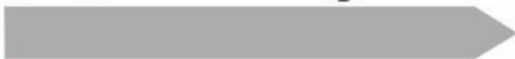
65 *Equipment*



68 *Battery Case Accessories*



71 *Battery Cells*



**Electric Bicycle
Battery Types**

***In-frame
Battery Packs***



***Down Tube
Battery Packs***



***Rear Carrier
Battery Packs***



***Multi-fit
Battery Packs***



***Seat Post
Battery Packs***



***Water Bottle
Battery Packs***



Certificates:

CE

ROHS

REACH

IEC62133

MSDS & UN38.3

EN ISO 13849-1:2015

BATTERY PACKS

In-frame

P5



Phoenix I YL-TPH1

P5



Phoenix II YL-TPH2

P6



Black Warrior I YL-TBW1

P6



Black Warrior II YL-TBW2

P7



Unicorn I YL-TUN1

P7



Unicorn II YL-TUN2

P7



Unicorn III YL-TUN3

P7



Unicorn IV YL-TUN4

P8



White Tiger YL-TWT0

P9



Changzheng | SS-TCZ1

P10



Sword YL-TSW0

P11



Dorado-Max RE-TDM0

P12



Suoni | SS-TSU1

P13



Lushan | SS-TLS1



▶ Waterproof Grade: IP 65 · Certifications: CE, EN ISO13849-1:2015, MSDS, UN38.3, IEC62133, ROHS, REACH

BATTERY PACKS

In-frame

P14



Flying Fish YL-TFF0

P15



Rapier RE-TRA0

P16



Scimitar RE-TSC0

P17



Eel-Pro RE-TEP0

P18



Eel-Mini RE-TEM0

P19



Razer YL-TRA0



P20



South Pacific I SS-TSP1

P21



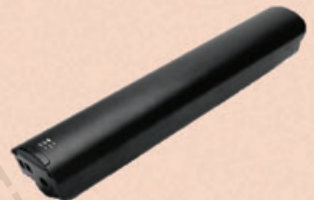
South Pacific II SS-TSP2

P22



South Pacific III SS-TSP3

P23



South Pacific IV SS-TSP4

P24



Dragon I YL-TDR1

P24



Dragon II YL-TDR2

P25



Dragon III YL-TDR3

P25



Dragon IV YL-TDR4

▶ Waterproof Grade: IP 65 · Certifications: CE, EN ISO13849-1:2015, MSDS, UN38.3, IEC62133, ROHS, REACH

BATTERY PACKS
Down Tube

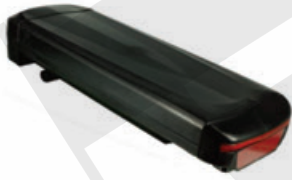


► Waterproof Grade: IP 65 · Certifications: CE, EN ISO13849-1:2015, MSDS, UN38.3, IEC62133, ROHS, REACH
 * Extra space for controller available

BATTERY PACKS

Rear Carrier

P30



Thunderstorm YL-CTS0

P31



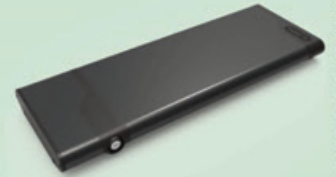
Lightning YL-CLN0

P32



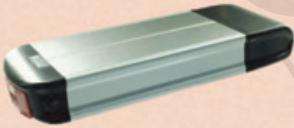
Blizzard YL-CBL0

P33



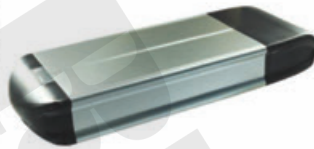
Shooting Star YL-CSS0

P34



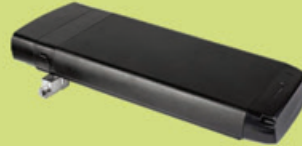
Haitun I SS-CHT1

P35



Haitun II SS-CHT2

P36



Blue Sky I YL-CBS1

P36



Blue Sky II YL-CBS2

P37



Breeze I YL-CBR1

P37



Breeze II YL-CBR2



P38



Jilong SS-CJL1

P39



Matsushita II YL-CMS2

P40



Tianlong I SS-CTL1

P41



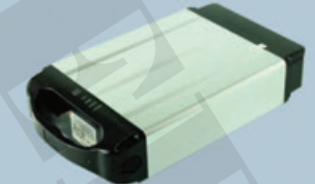
Tianlong III SS-CTL3

P42



White Cloud I YL-CWC1

P42



White Cloud II YL-CWC2

▶ Waterproof Grade: IP 65 · Certifications: CE, EN ISO13849-1:2015, MSDS, UN38.3, IEC62133, ROHS, REACH
 * Extra space for controller available

BATTERY PACKS

Multi-fit

P43



Seahorse YL-MSH0



P43



Starfish YL-MSF0



P43



Coral YL-MCR0



P43



Jellyfish YL-MJF0



P43



Blue Whale YL-MBW0



P44



Fangbao YL-MFB0



with Controller Box Base

Welding



Clipping



Seat Post

P45



Armour I YL-SAR1

P45



Armour II YL-SAR2

P46



Sakura II WY-SSA2



P45



Whitebait I YL-SWB1

P45



Whitebait III YL-SWB3

P45



Whitebait IV YL-SWB4

P47



Ant YL-SAN0

▶ Waterproof Grade: IP 65 · Certifications: CE, EN ISO13849-1:2015, MSDS, UN38.3, IEC62133, ROHS, REACH

✳ Extra space for controller available

BATTERY PACKS
Water Bottle



Extra Space for controller



► Waterproof Grade: IP 65 · Certifications: CE, EN ISO13849-1:2015, MSDS, UN38.3, IEC62133, ROHS, REACH
 * Extra space for controller available

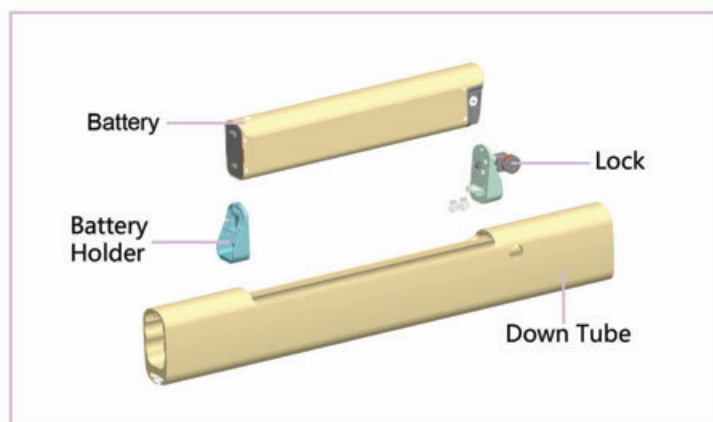
In-frame Battery Packs

Phoenix Series



Down Tube
 Dimensions (mm):
 780 (L) x 102.1 (W) x 56.3 (H)
 Weight (kg): 3.36

eRider No.	YL-TPH1		YL-TPH2	
Voltage	24V	36V	36V	48V
Configurations	7S3P	10S3P	10S4P	13S3P
Rate	6.6Ah - 10.5Ah	6.6Ah - 10.5Ah	8.8Ah - 14.0Ah	6.6Ah - 10.5Ah
Weight (kg)	1.8	1.8	2.4	2.4
Dimensions (mm)	321 (L) x 54.5 (W) x 79.8 (H)	385 (L) x 54.5 (W) x 79.8 (H)	452 (L) x 54.5 (W) x 79.8 (H)	452 (L) x 54.5 (W) x 79.8 (H)



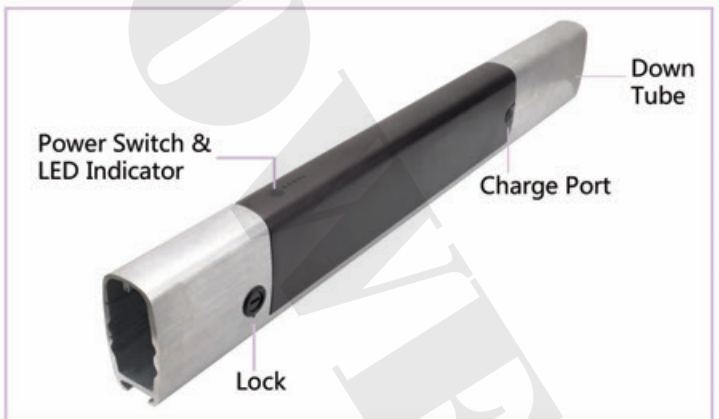
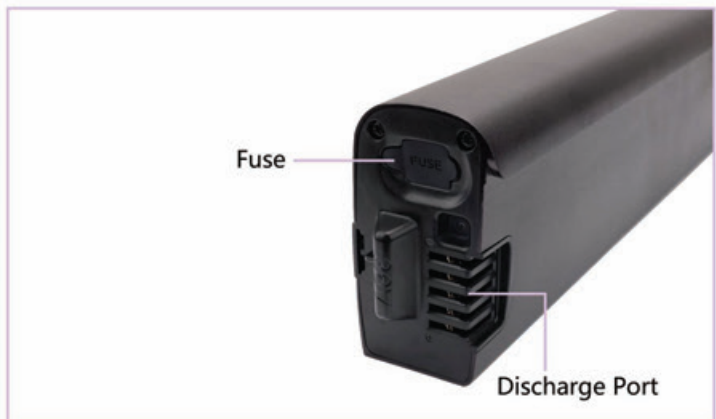
In-frame Battery Packs

Black Warrior Series



Down Tube Dimensions (mm):
780.0 (L) x 109.7 (W) x 55.0 (H)
Weight (kg): 2.1

eRider No.	YL-TBW1	YL-TBW2	
Voltage	36V NEW	36V	48V NEW
Configurations	10S3P	10S4P	13S3P
Rate	6.6Ah - 10.5Ah	8.8Ah - 14.0Ah	6.6Ah - 10.5Ah
Dimensions (mm)	353.6 (L) x 91.1 (W) x 53.5 (H)	447.6 (L) x 91.1 (W) x 53.5 (H)	447.6 (L) x 91.1 (W) x 53.5 (H)



In-frame Battery Packs

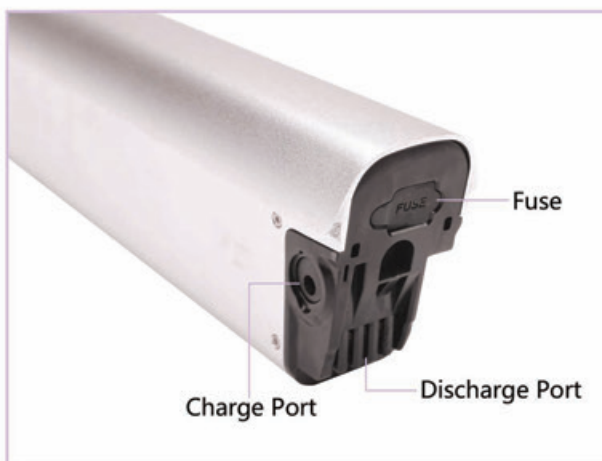
Unicorn Series



21700 cell available

eRider No.			YL-TUN1	YL-TUN2
Voltage	36V NEW	36V NEW	36V NEW	36V NEW
Configurations	10S3P / 18650	10S4P / 18650	10S4P / 18650	10S5P / 18650
Rate	6.6Ah - 10.5Ah	8.8Ah - 14.0Ah	8.8Ah - 14.0Ah	11.0Ah - 17.5Ah
Dimensions (mm)	412.0 (L) x 57.0 (W) x 89.7 (H)	412.0 (L) x 57.0 (W) x 89.7 (H)	487.3 (L) x 57.0 (W) x 90.0 (H)	487.3 (L) x 57.0 (W) x 90.0 (H)

eRider No.	YL-TUN3	YL-TUN4		
Voltage	36V NEW	36V NEW	48V NEW	48V NEW
Configurations	10S3P / 21700	10S4P / 21700	13S3P / 18650	13S3P / 21700
Rate	15.0Ah	20.0Ah	6.6Ah - 10.5Ah	15.0Ah
Dimensions (mm)	418.5 (L) x 57.0 (W) x 89.7 (H)	493.8 (L) x 57.0 (W) x 90.0 (H)	487.3 (L) x 57.0 (W) x 90.0 (H)	493.8 (L) x 57.0 (W) x 90.0 (H)

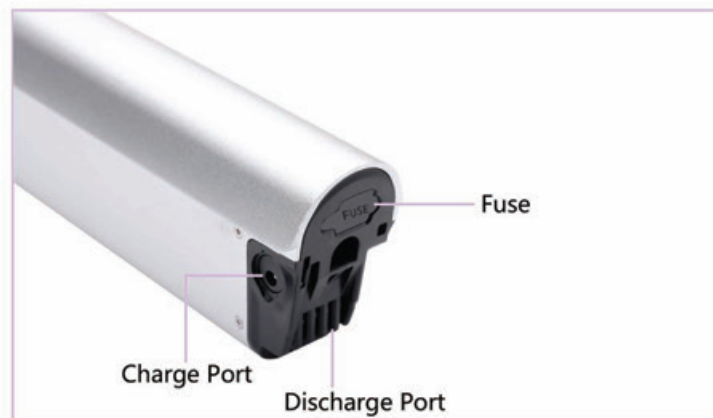


In-frame Battery Packs

White Tiger Series

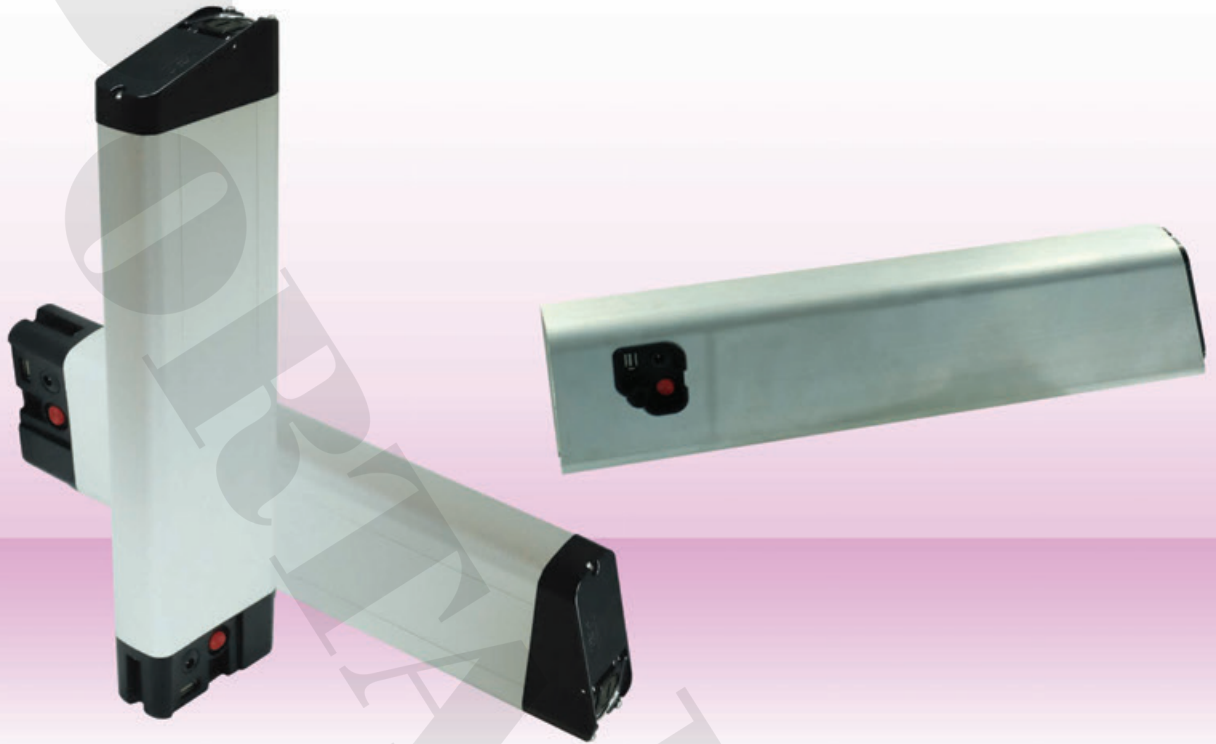


eRider No.	YL-TWT0	
Voltage	36V NEW	48V NEW
Configurations	10S4P	13S3P
Rate	8.8Ah - 14.0Ah	6.6Ah - 10.5Ah
Dimensions (mm)	485.0 (L) x 55.1 (W) x 87.6 (H)	485.0 (L) x 55.1 (W) x 87.6 (H)

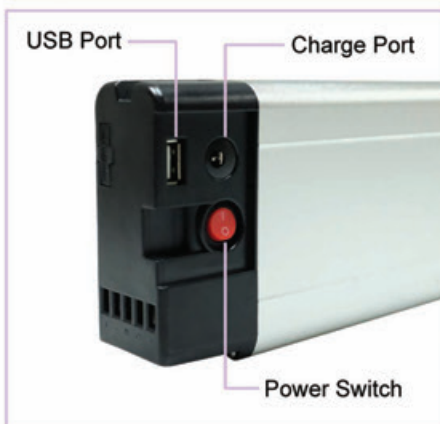
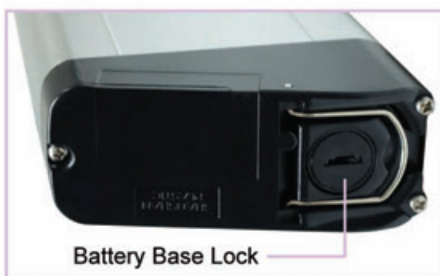


In-frame Battery Packs

Changzheng Series



Model No.	SS-TCZ1
Voltage	36V
Configurations	10S4P
Rate/Watt Hour	8.8Ah/317Wh - 14.0Ah/504Wh

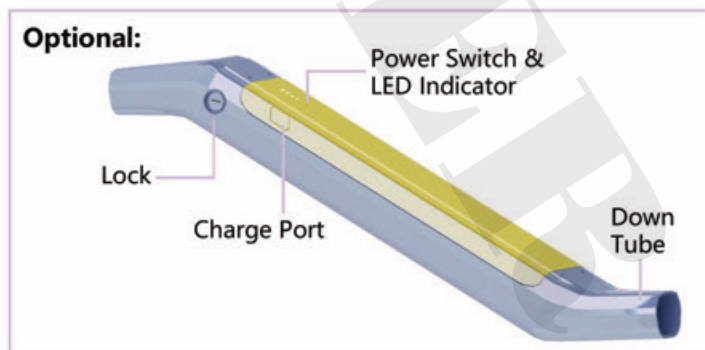
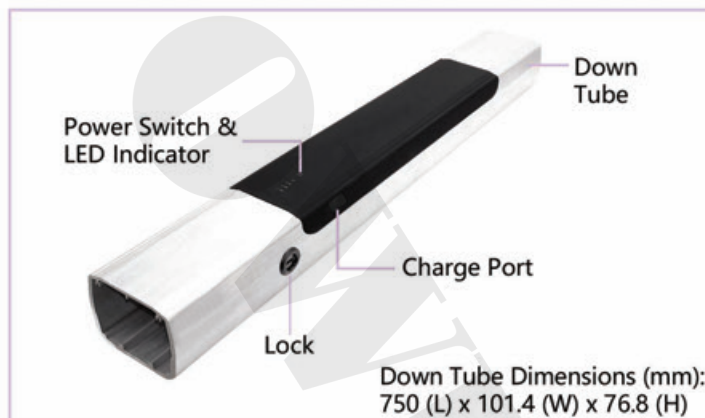


In-frame Battery Packs

Sword Series



eRider No.	YL-TSW0
Voltage	36V NEW
Configurations	10S5P
Rate/Watt Hour	11.0Ah/396Wh - 17.5Ah/630Wh
Dimensions (mm)	430 (L) x 99.8 (W) x 65 (H)



In-frame Battery Packs

Droado-Max Series



eRider No.	RE-TDM0	
Voltage	36V NEW	36V NEW
Configurations	10S6P	10S8P
Rate/Watt Hour	13.2Ah/475Wh - 21.0Ah/756Wh	17.6Ah/634Wh - 28Ah/1008Wh
Dimensions (mm)	390 (L) x 75.5 (W) x 98 (H)	460 (L) x 80 (W) x 110 (H)

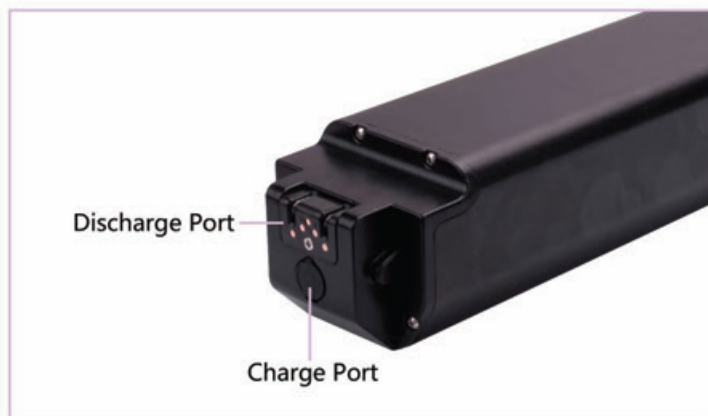


In-frame Battery Packs

Suoni I Series



eRider No.	SS-TSU1	
Voltage	36V NEW	48V NEW
Configurations	10S4P	13S4P
Rate/Watt Hour	8.8Ah/317Wh - 14.0Ah/504Wh	8.8Ah/317Wh - 14.0Ah/504Wh
Dimensions (mm)	398.1 (L) x 83 (W) x 74.2 (H)	398.1 (L) x 83 (W) x 74.2 (H)



In-frame Battery Packs

Lushan I Series



Down Tube
 Dimensions (mm):
 780 (L) x 110.5 (W) x 71 (H)
 Weight (kg): 2.7

Model No.	SS-TLS1	
Voltage	36V	48V
Configurations	10S4P	13S3P
Rate/Watt Hour	8.8Ah/317Wh - 14.0Ah/504Wh	6.6Ah/317Wh - 10.5Ah/504Wh
Dimensions (mm)	452 (L) x 89 (W) x 65 (H)	452 (L) x 89 (W) x 65 (H)



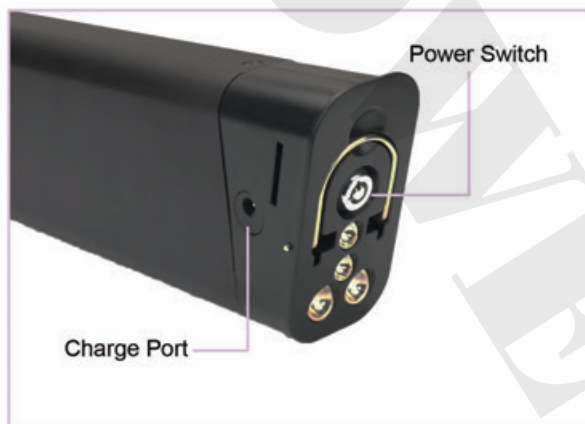
In-frame Battery Packs

Flying Fish Series



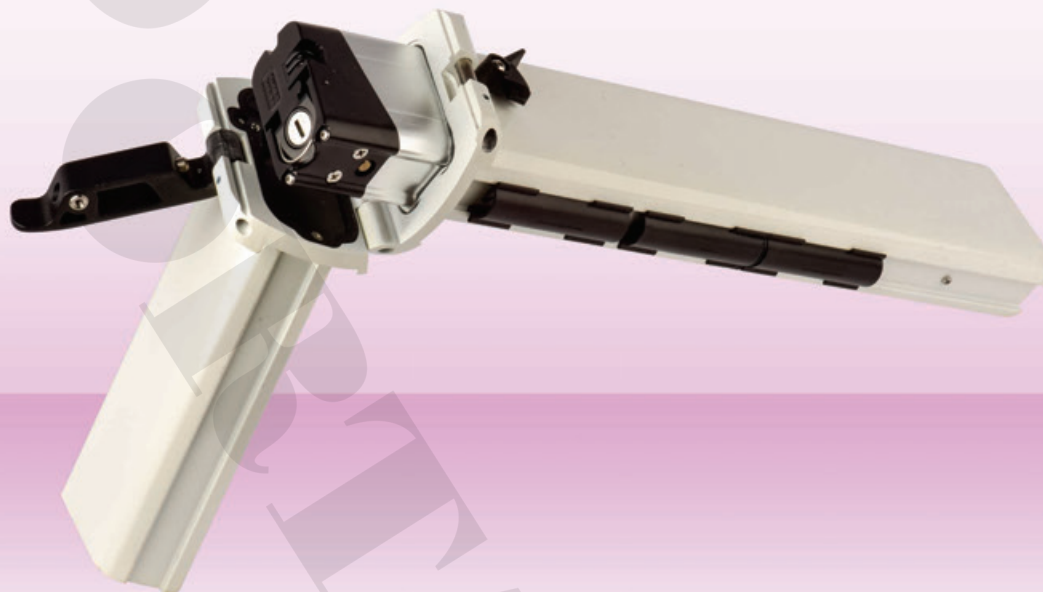
Base Dimensions (mm):
83.4 (L) x 45.1 (W) x 29.4 (H)

eRider No.	YL-TFF0	
Voltage	24V	36V
Configurations	7S4P	10S3P
Rate	8.8Ah - 14.0Ah	6.6Ah - 10.5Ah
Weight (kg)	1.76	1.8
Dimensions (mm)	382.2 (L) x 45 (W) x 86.2 (H)	382.2 (L) x 45 (W) x 86.2 (H)

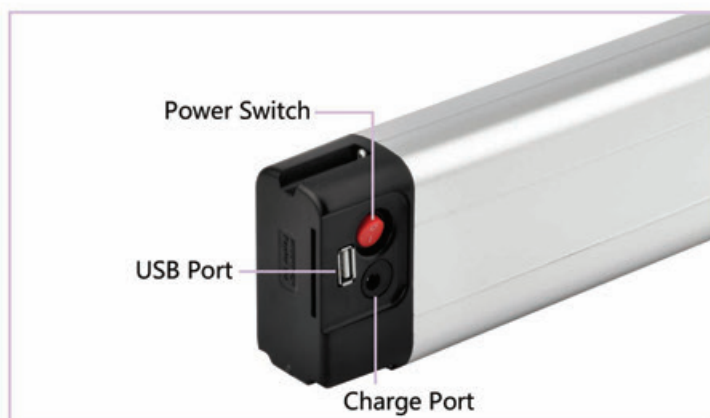


In-frame Battery Packs

Rapier Series



eRider No.	RE-TRA0
Voltage	36V NEW
Configurations	10S4P
Rate/Watt Hour	8.8Ah/317Wh - 14.0Ah/504Wh
Dimensions (mm)	379 (L) x 41 (W) x 96 (H)

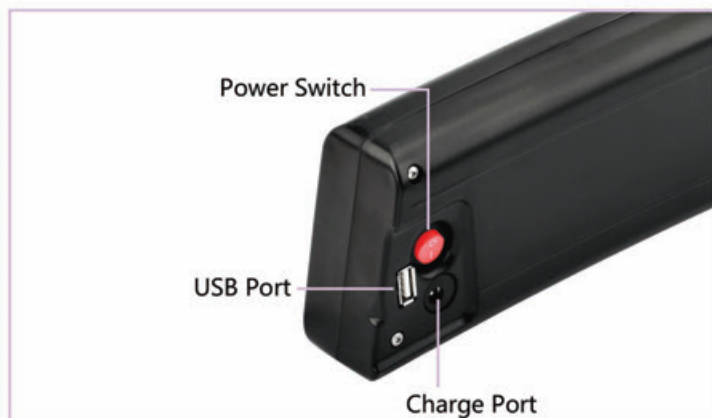


In-frame Battery Packs

Scimitar Series



eRider No.	RE-TSC0
Voltage	36V NEW
Configurations	10S3P
Rate/Watt Hour	6.6Ah/238Wh - 10.5Ah/378Wh
Dimensions (mm)	375.5 (L) x 40.2 (W) x 99 (H)



In-frame Battery Packs

Eel-Pro Series



Down Tube Dimensions (mm):
750 (L) x 64.3 (W) x 105.2 (H)

eRider No.	RE-TEP0	
Voltage	36V NEW	36V NEW
Configurations	10S4P	10S5P
Rate/Watt Hour	8.8Ah/317Wh - 14.0Ah/504Wh	11.0Ah/396Wh - 17.5Ah/630Wh
Dimensions (mm)	430 (L) x 68 (W) x 93 (H)	430 (L) x 68 (W) x 93 (H)

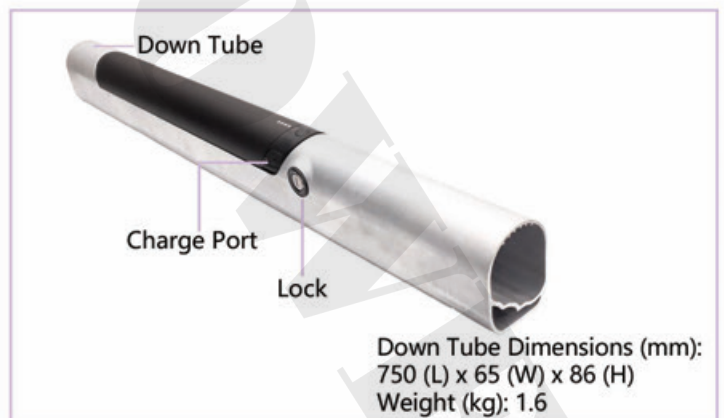


In-frame Battery Packs

Eel-Mini Series



eRider No.	RE-TEM0	
Voltage	36V NEW	36V NEW
Configurations	10S3P	10S4P
Rate/Watt Hour	6.6Ah/238Wh - 10.5Ah/378Wh	8.8Ah/317Wh - 14.0Ah/504Wh
Dimensions (mm)	430 (L) x 68 (W) x 75 (H)	430 (L) x 68 (W) x 75 (H)



In-frame Battery Packs

Razer Series



Down Tube Dimensions (mm):
834.0 (L) x 76.1 (W) S-shaped
Weight (kg): 1.8

Model No.	YL-TRA0	
Voltage	36V NEW	48V NEW
Configurations	10S5P	13S4P
Rate/Watt Hour	11.0Ah/396Wh - 17.5Ah/630Wh	8.8Ah/422Wh - 14.0Ah/672Wh
Dimensions (mm)	448.0 (L) x 83.5 (W) x 78.5 (H)	448.0 (L) x 83.5 (W) x 78.5 (H)

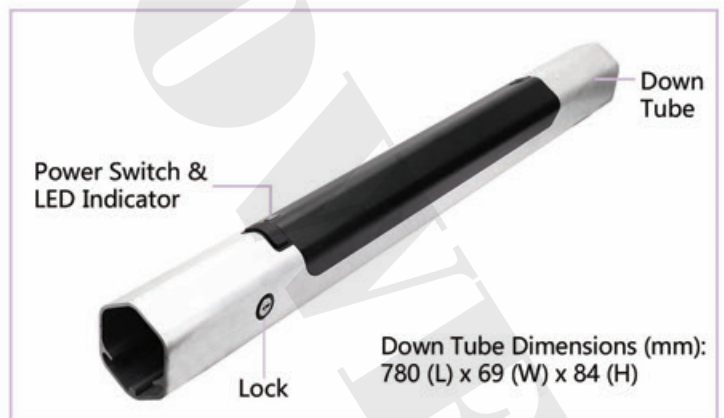
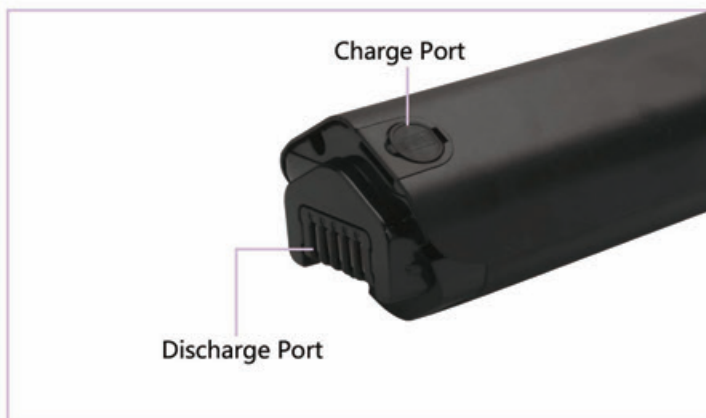


In-frame Battery Packs

South Pacific I Series



eRider No.	SS-TSP1
Voltage	36V NEW
Configurations	10S4P
Rate/Watt Hour	8.8Ah/317Wh - 14.0Ah/504Wh
Dimensions (mm)	466.4 (L) x 68.5 (W) x 67 (H)

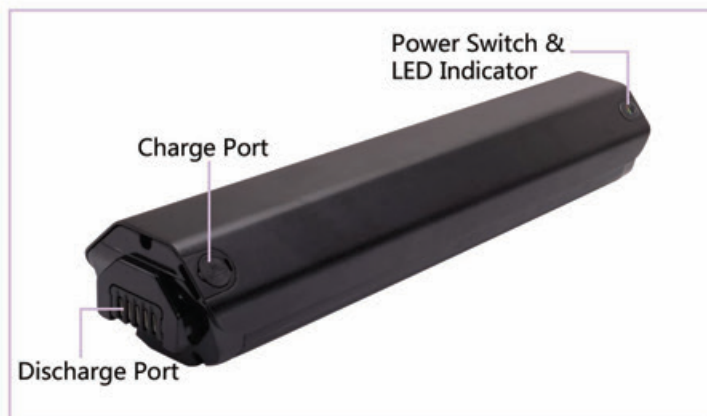


In-frame Battery Packs

South Pacific II Series



eRider No.	SS-TSP2	
Voltage	36V NEW	36V NEW
Configurations	10S4P	10S5P
Rate/Watt Hour	8.8Ah/317Wh - 14.0Ah/504Wh	11.0Ah/396Wh - 17.5Ah/630Wh
Dimensions (mm)	466.4 (L) x 84.7 (W) x 68.3 (H)	466.4 (L) x 84.7 (W) x 68.3 (H)

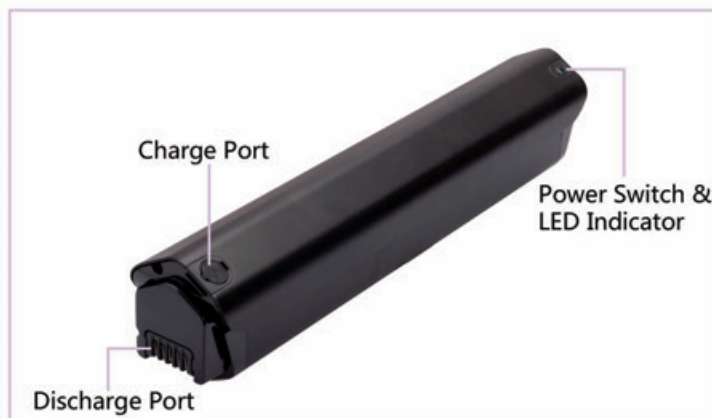


In-frame Battery Packs

South Pacific III Series



eRider No.	SS-TSP3	
Voltage	36V NEW	36V NEW
Configurations	10S5P	10S6P
Rate/Watt Hour	11.0Ah/396Wh - 17.5Ah/630Wh	13.2Ah/475Wh - 21.0Ah/756Wh
Dimensions (mm)	466.4 (L) x 68.5 (W) x 86.7 (H)	466.4 (L) x 68.5 (W) x 86.7 (H)

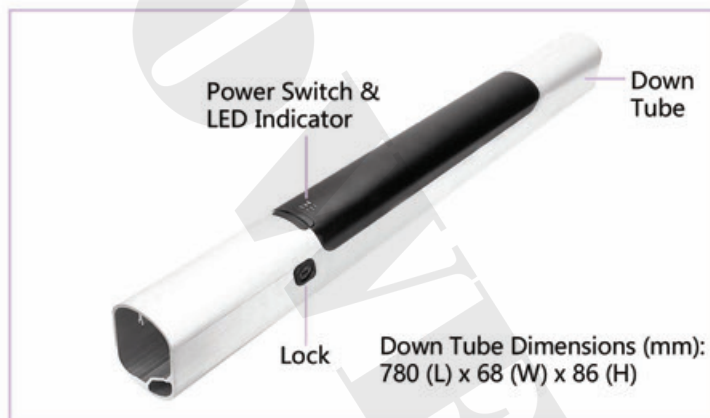


In-frame Battery Packs

South Pacific IV Series



eRider No.	SS-TSP4	
Voltage	36V NEW	36V NEW
Configurations	10S3P	10S4P
Rate/Watt Hour	6.6Ah/238Wh - 10.5Ah/378Wh	8.8Ah/317Wh - 14.0Ah/504Wh
Dimensions (mm)	420 (L) x 68 (W) x 76.4 (H)	420 (L) x 68 (W) x 76.4 (H)



In-frame Battery Packs

Dragon Series



Dragon I

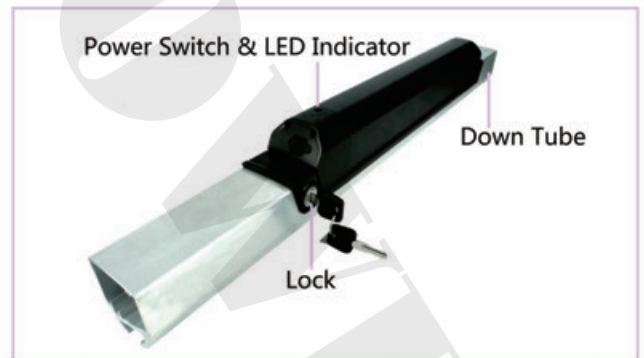


Dragon II



Down Tube Dimensions (mm):
750.0 (L) x 73.3 (W) x 61.0 (H)
Weight (kg):1.9

Model No.	YL-TDR1		YL-TDR2	
Voltage	36V	48V	36V NEW	48V NEW
Configurations	10S4P	13S3P	10S5P	13S4P
Rate/Watt Hour	8.8Ah/317Wh - 14.0Ah/504Wh	6.6Ah/317Wh - 10.5Ah/504Wh	11.0Ah/396Wh - 17.5Ah/630Wh	8.8Ah/422Wh - 14.0Ah/672Wh
Dimensions (mm)	394.9 (L) x 65.0 (W) x 84.4 (H)	394.9 (L) x 65.0 (W) x 84.4 (H)	460.1 (L) x 65.0 (W) x 84.4 (H)	460.1 (L) x 65.0 (W) x 84.4 (H)



In-frame Battery Packs

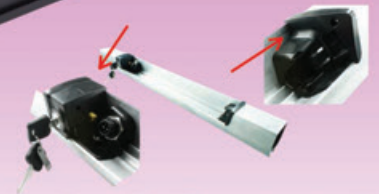
Dragon Series



Dragon III

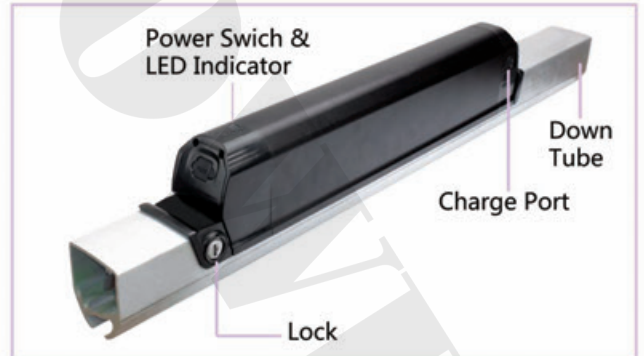


Dragon IV



Down Tube Dimensions (mm):
750.0 (L) x 73.3 (W) x 61.0 (H)
Weight (kg):1.9

Model No.	YL-TDR3		YL-TDR4	
Voltage	36V	48V	36V NEW	48V NEW
Configurations	10S6P	13S5P	10S5P	13S4P
Rate/Watt Hour	13.2Ah/475Wh - 21.0Ah/756Wh	11.0Ah/528Wh - 17.5Ah/840Wh	11.0Ah/396Wh - 17.5Ah/630Wh	8.8Ah/422Wh - 14.0Ah/672Wh
Dimensions (mm)	460.1 (L) x 65 (W) x 103.4 (H)	460.1 (L) x 65 (W) x 103.4 (H)	394.9 (L) x 65 (W) x 103.4 (H)	394.9 (L) x 65 (W) x 103.4 (H)



Down Tube Battery Packs

Wasp Series

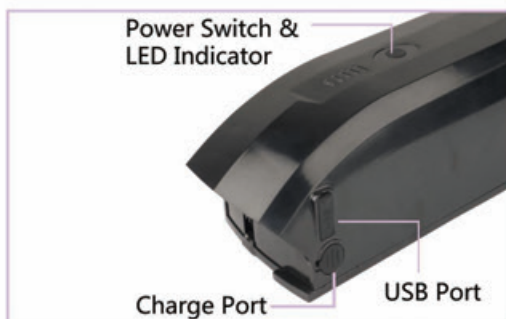


Wasp I



Wasp II

Model No.	YL-DWA1		YL-DWA2	
Voltage	36V NEW	48V NEW	36V NEW	48V NEW
Configurations	10S4P	13S3P	10S5P	13S4P
Rate/Watt Hour	8.8Ah/317Wh - 14.0Ah/504Wh	6.6Ah/317Wh - 10.5Ah/504Wh	11.0Ah/396Wh - 17.5Ah/630Wh	8.8Ah/422Wh - 14.0Ah/672Wh
Dimensions (mm)	312.5 (L) x 91.9 (W) x 93.3 (H)	312.5 (L) x 91.9 (W) x 93.3 (H)	312.5 (L) x 91.9 (W) x 104.5 (H)	312.5 (L) x 91.9 (W) x 104.5 (H)

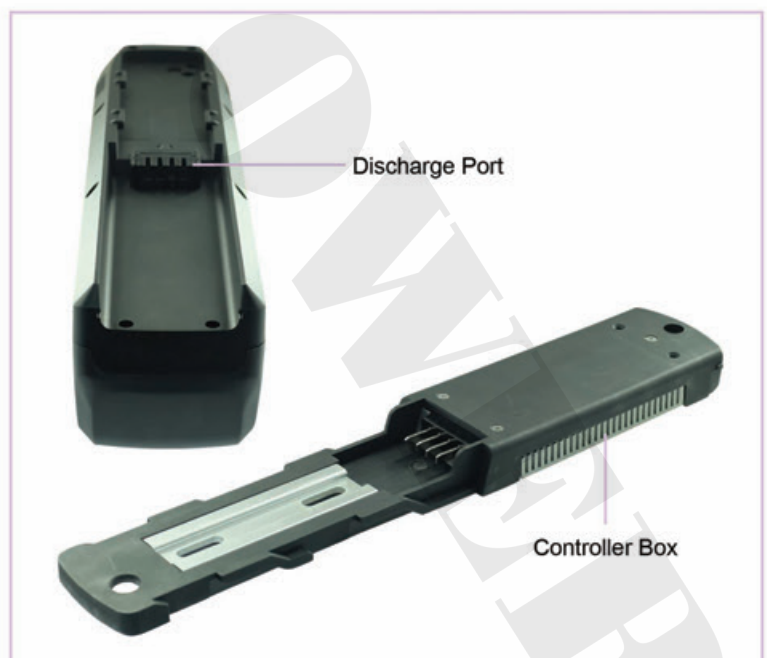


Down Tube Battery Packs

Hailong I Series



Model No.	SS-DHL1		
Voltage	36V	36V	48V
Configurations	10S4P	10S5P	13S4P
Rate/Watt Hour	8.8Ah/317Wh - 14.0Ah/504Wh	11.0Ah/396Wh - 17.5Ah/630Wh	8.8Ah/422Wh - 14.0Ah/672Wh



Down Tube Battery Packs

Hailong I-2 Series



Model No.	SS-DHL2	
Voltage	36V	48V
Configurations	10S6P	13S5P
Rate/Watt Hour	13.2Ah/475Wh - 21.0Ah/756Wh	11.0Ah/528Wh - 17.5Ah/840Wh



Down Tube Battery Packs

Tiger Shark Series



Tiger Shark I

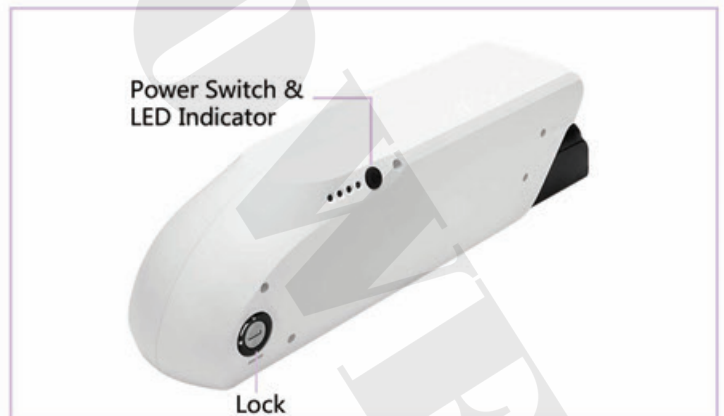


Tiger Shark II



Tiger Shark III

eRider No.	RE-DTS1	RE-DTS3	RE-DTS2	
Voltage	36V NEW	36V NEW	36V NEW	48V NEW
Configurations	10S4P	10S6P	10S5P	13S4P
Rate/Watt Hour	8.8Ah/317Wh - 14.0Ah/504Wh	13.2Ah/475Wh - 21.0Ah/756Wh	11.0Ah/396Wh - 17.5Ah/630Wh	8.8Ah/317Wh - 14.0Ah/504Wh
Dimensions (mm)	378 (L) x 78 (W) x 99 (H)	377 (L) x 78 (W) x 132 (H)	379 (L) x 78 (W) x 114 (H)	379 (L) x 78 (W) x 114 (H)



Rear Carrier Battery Packs

Thunderstorm Series

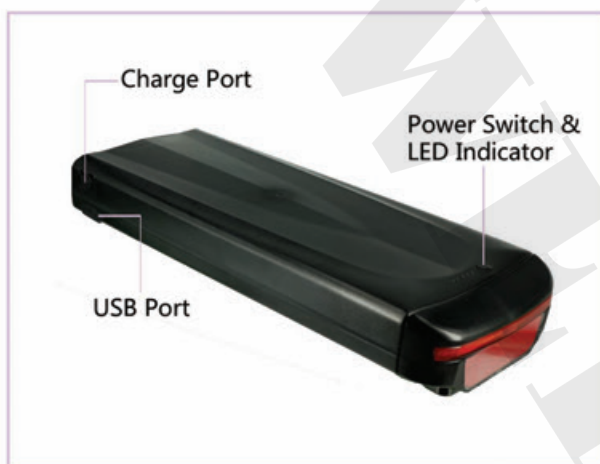
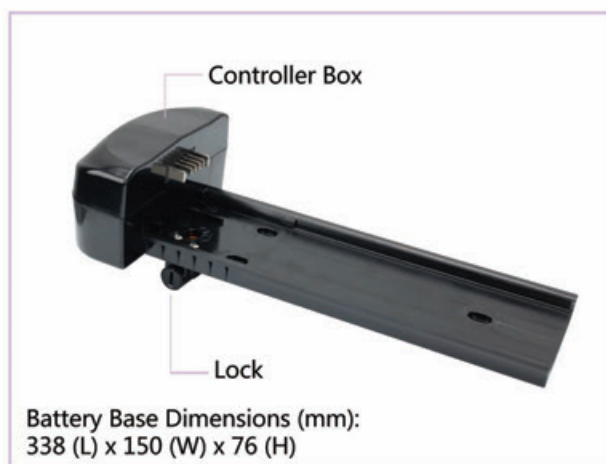


Rear Carrier Available:



Model No.	YL-CTS0		
Voltage	36V	36V NEW	36V NEW
Configurations	10S5P	10S6P	10S7P
Rate/Watt Hour	11.0Ah/396Wh - 17.5Ah/630Wh	13.2Ah/475Wh - 21.0Ah/756Wh	15.4Ah/554Wh - 24.5Ah/882Wh
Dimensions (mm)	379.8 (L) x 150.0 (W) x 72.6 (H)	379.8 (L) x 150.0 (W) x 72.6 (H)	379.8 (L) x 150.0 (W) x 72.6 (H)

Model No.	YL-CTS0	
Voltage	48V	48V NEW
Configuration	13S4P	13S5P
Rate/Watt Hour	8.8Ah/422Wh - 14.0Ah/672Wh	11.0Ah/528Wh - 17.5Ah/840Wh
Dimensions (mm)	379.8 (L) x 150.0 (W) x 72.6 (H)	379.8 (L) x 150.0 (W) x 72.6 (H)



Rear Carrier Battery Packs

Lightning Series



Rear Carrier Available:



Model No.	YL-CLN0
Voltage	36V NEW
Configurations	10S4P
Rate/Watt Hour	8.8Ah/317Wh - 14.0Ah/504Wh
Dimensions (mm)	387.8 (L) x 140.0 (W) x 46.8 (H)

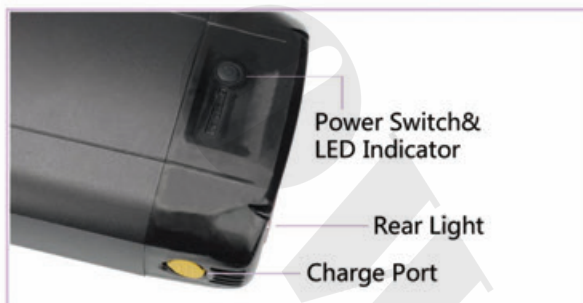
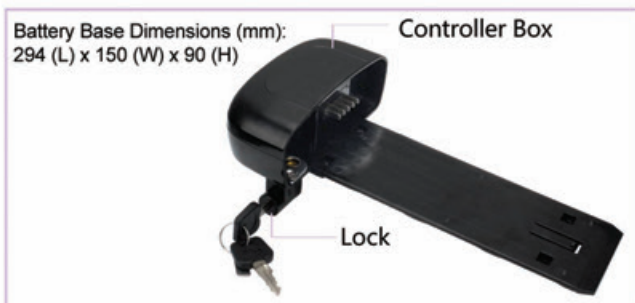


Rear Carrier Battery Packs

Blizzard Series



Model No.	YL-CBL0
Voltage	36V NEW
Configurations	10S5P
Rate/Watt Hour	11.0Ah/396Wh - 17.5Ah/630Wh
Dimensions (mm)	326.3 (L) x 149.5 (W) x 61.0 (H)

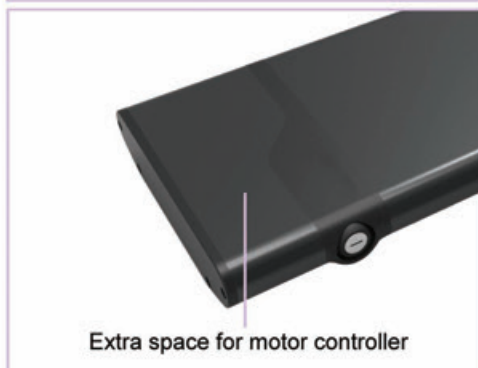
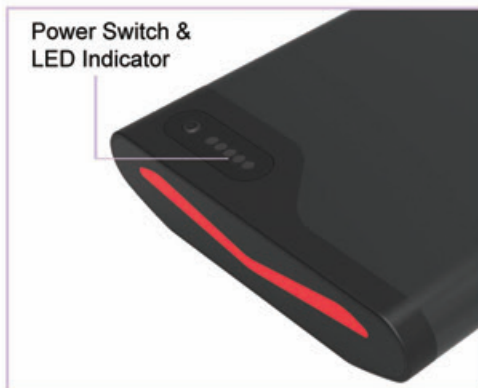


Rear Carrier Battery Packs

Shooting Star Series

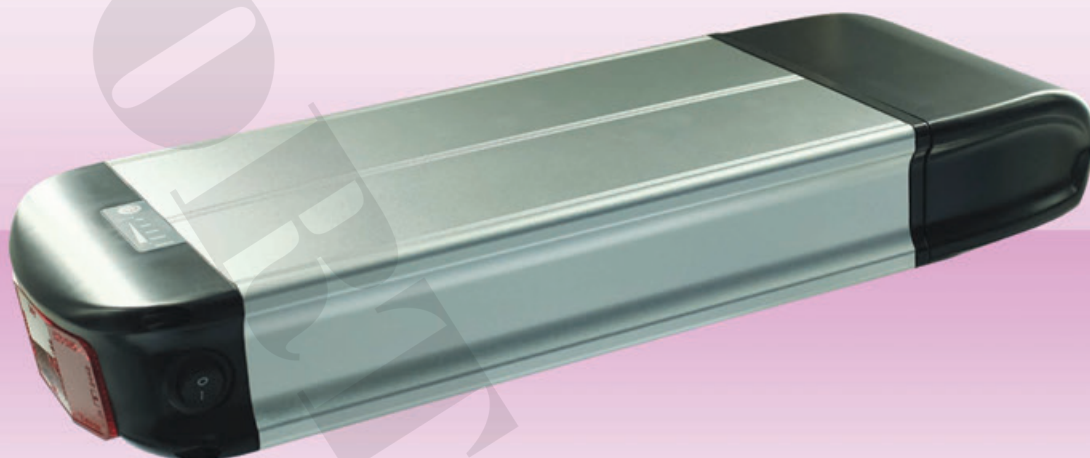


Model No.	SS-CSS0
Voltage	36V
Configurations	10S3P
Rate/Watt Hour	6.6Ah/238Wh - 10.5Ah/378Wh



Rear Carrier Battery Packs

Haitun I Series

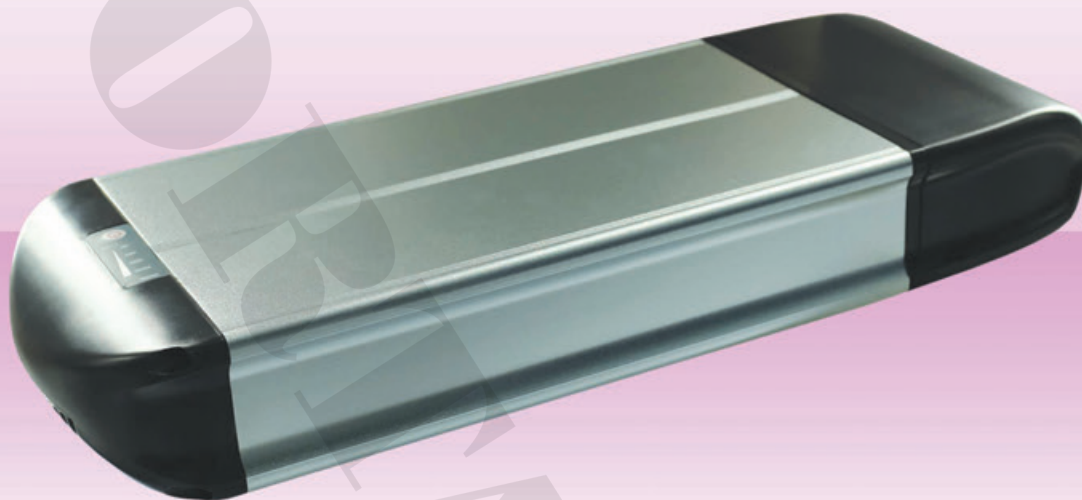


Model No.	SS-CHT1	
Voltage	36V	48V
Configurations	10S5P	13S4P
Rate/Watt Hour	11.0Ah/396Wh - 17.5Ah/630Wh	8.8Ah/422Wh - 14.0Ah/672Wh



Rear Carrier Battery Packs

Haitun Series



Model No.	SS-CHT2	
Voltage	36V	48V
Configurations	10S5P	13S4P
Rate/Watt Hour	11.0Ah/396Wh - 17.5Ah/630Wh	8.8Ah/422Wh - 14.0Ah/672Wh



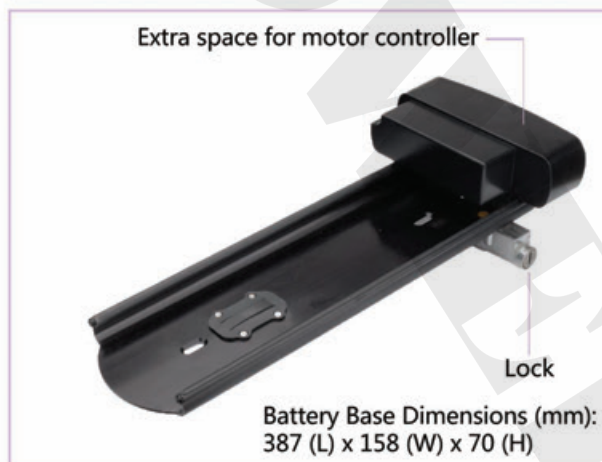
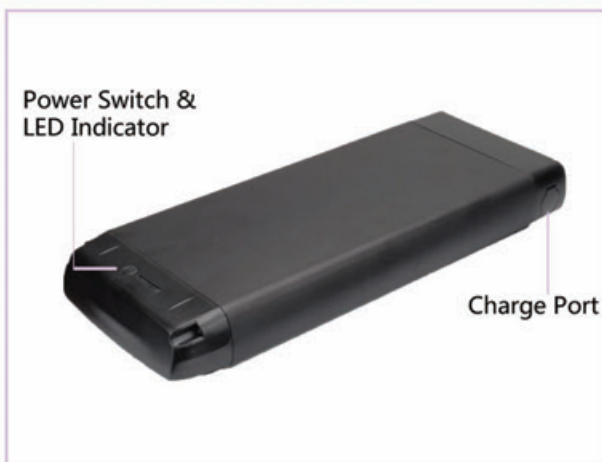
Rear Carrier Battery Packs

Blue Sky Series



Model No.	YL-CBS1			
Voltage	36V NEW	36V NEW	36V NEW	48V NEW
Configurations	10S4P	10S5P	10S6P	13S5P
Rate/Watt Hour	8.8Ah/317Wh - 14.0Ah/504Wh	11.0Ah/396Wh - 17.5Ah/630Wh	13.2Ah/475Wh - 21.0Ah/756Wh	11.0Ah/528Wh - 17.5Ah/840Wh
Dimensions (mm)	371.7 (L) x 158.2 (W) x 63.6 (H)	371.7 (L) x 158.2 (W) x 63.6 (H)	371.7 (L) x 158.2 (W) x 63.6 (H)	371.7 (L) x 158.2 (W) x 63.6 (H)

Model No.	YL-CBS2	
Voltage	36V NEW	
Configurations	10S3P	
Rate/Watt Hour	6.6Ah - 10.5Ah	
Dimensions (mm)	316.7 (L) x 158.2 (W) x 63.6 (H)	



Rear Carrier Battery Packs

Breeze Series



Breeze I

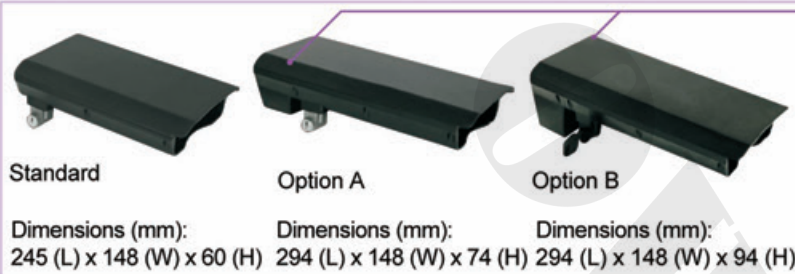


Breeze II

Rear Carrier Available:



Model No.	YL-CBR2		YL-CBR1	
Voltage	24V	36V	36V	48V NEW
Configurations	7S4P	10S3P	10S4P	13S3P
Rate/Watt Hour	8.8Ah/211Wh - 14.0Ah/336Wh	6.6Ah/238Wh - 10.5Ah/378Wh	8.8Ah/317Wh - 14.0Ah/504Wh	6.6Ah/317Wh - 10.5Ah/504Wh
Weight (kg)	1.77	1.85	2.4	2.3
Dimensions (mm)	249 (L) x 148 (W) x 56 (H)	249 (L) x 148 (W) x 56 (H)	321 (L) x 148 (W) x 56 (H)	321 (L) x 148 (W) x 56 (H)



Rear Carrier Battery Packs

Jilong I Series



Model No.		SS-CJL1	
Voltage	36V	36V	48V
Configurations	10S4P	10S5P	13S4P
Rate/Watt Hour	8.8Ah/317Wh - 14.0Ah/504Wh	11.0Ah/396Wh - 17.5Ah/630Wh	8.8Ah/422Wh - 14.0Ah/672Wh



Rear Carrier Battery Packs

Matsushita II Series

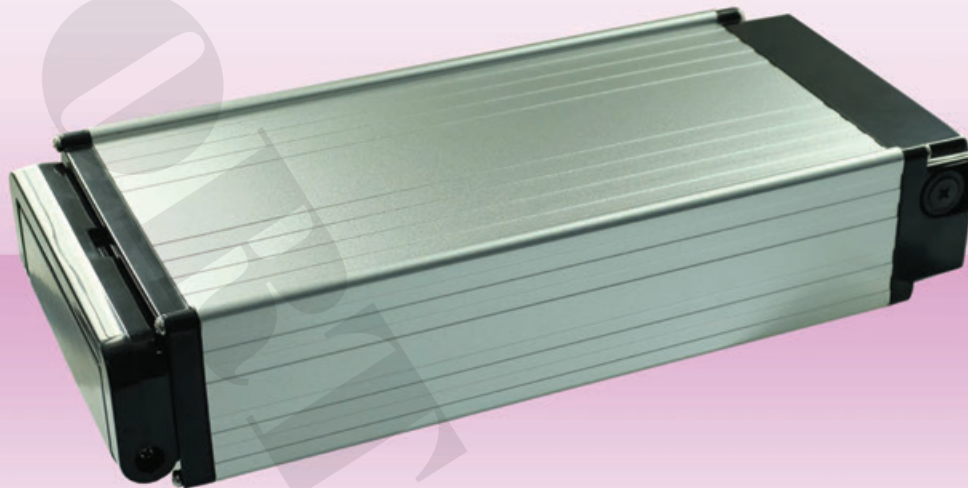


Model No.	YL-CMS2			
Voltage	36V	36V	36V	48V
Configurations	10S3P	10S4P	10S5P	13S4P
Rate/Watt Hour	6.6Ah/238Wh - 10.5Ah/378Wh	8.8Ah/317Wh - 14.0Ah/504Wh	11.0Ah/396Wh - 17.5Ah/630Wh	8.8Ah/422Wh - 14.0Ah/672Wh

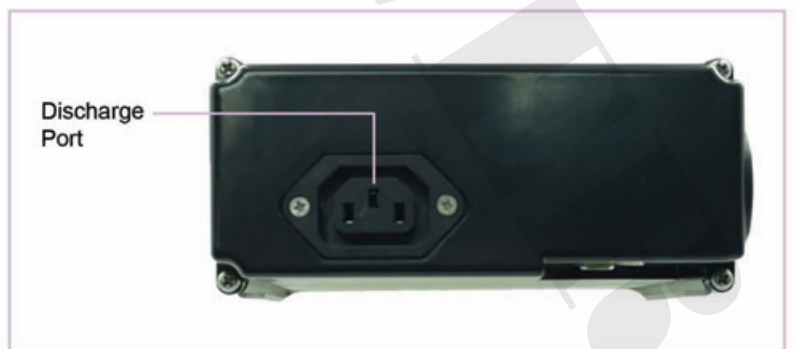
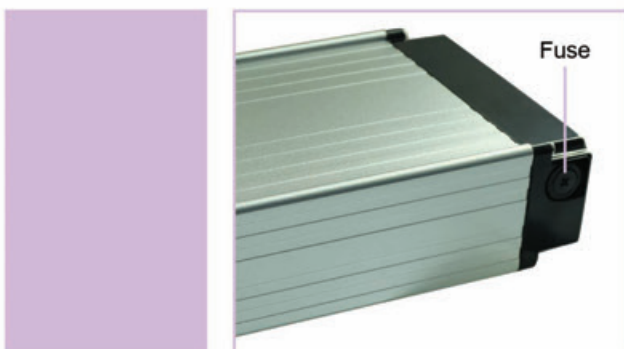


Rear Carrier Battery Packs

Tianlong I Series

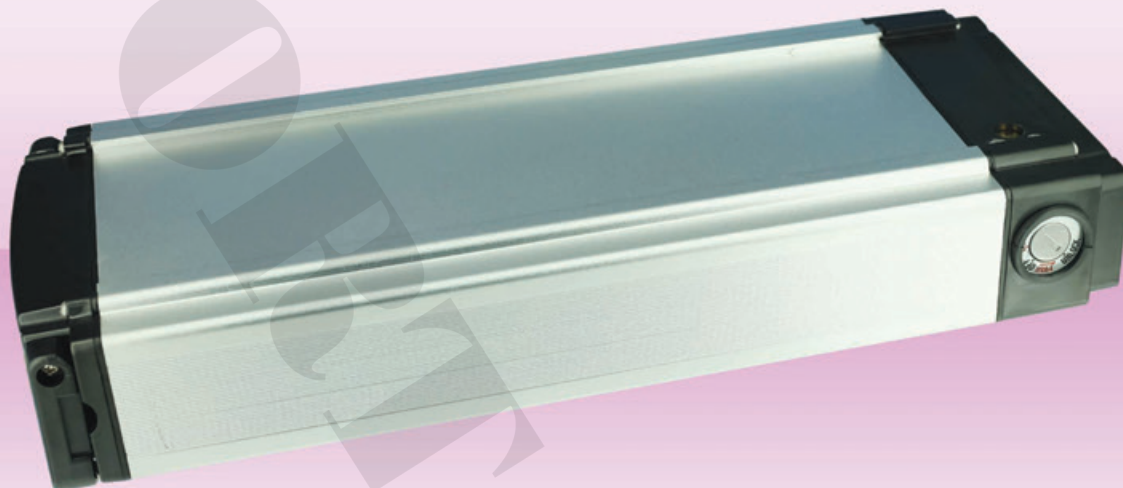


Model No.	SS-CTL1	
Voltage	36V	48V
Configurations	10S5P	13S4P
Rate/Watt Hour	11.0Ah/396Wh - 17.5Ah/630Wh	8.8Ah/422Wh - 14.0Ah/672Wh

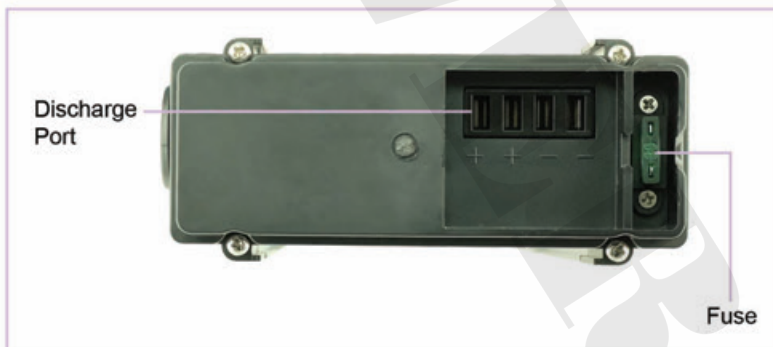
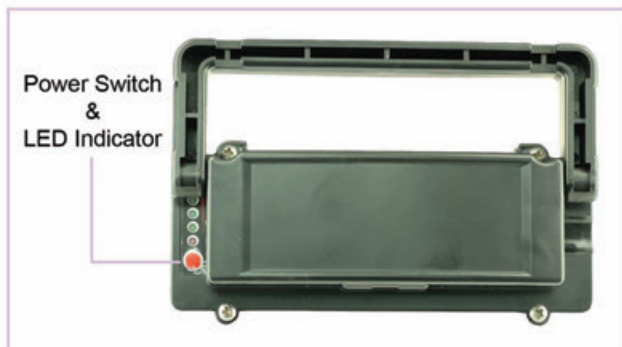
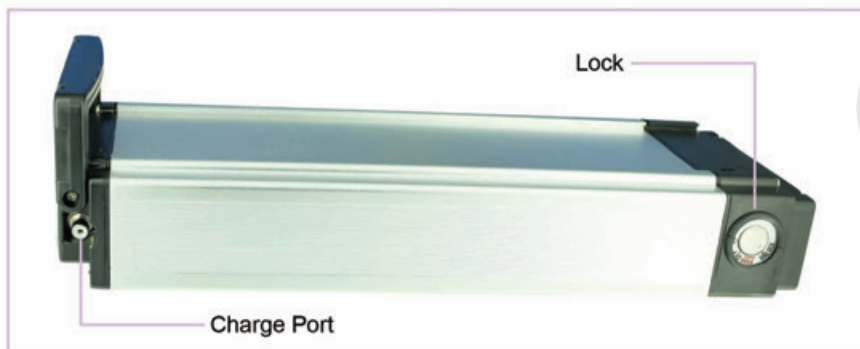


Rear Carrier Battery Packs

Tianlong III Series



Model No.	SS-CTL3	
Voltage	36V	48V
Configurations	10S5P	13S4P
Rate/Watt Hour	11.0Ah/396Wh - 17.5Ah/630Wh	8.8Ah/422Wh - 14.0Ah/672Wh



Rear Carrier Battery Packs

White Cloud Series



White Cloud II




White Cloud I


Model No.	YL-CWC2		YL-CWC1	
Voltage	24V		24V	36V
Configurations	7S4P		7S5P	10S3P
Rate/Watt Hour	8.8Ah/211Wh - 14.0Ah/336Wh	11.0Ah/264Wh - 17.5Ah/420Wh	6.6Ah/238Wh - 10.5Ah/378Wh	8.8Ah/317Wh - 14.0Ah/504Wh
Weight (kg)	2.45		2.5	2.65
Dimensions (mm)	291 (L) x 151 (W) x 53 (H)		365 (L) x 151 (W) x 53 (H)	365 (L) x 151 (W) x 53 (H)

Connect to different battery bases

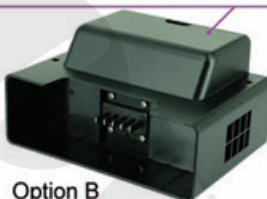





Standard
Dimensions (mm):
150 (L) x 60 (W) x 53 (H)



Option A
Dimensions (mm):
150 (L) x 143 (W) x 53 (H)



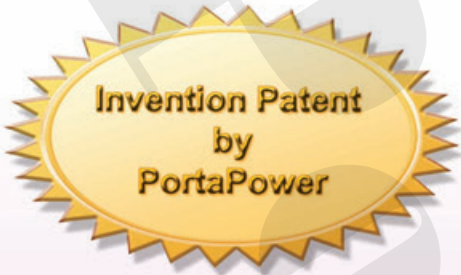
Option B
Dimensions (mm):
150 (L) x 107 (W) x 79 (H)



Extra space for motor controller



Multi-fit Battery Packs



Coral



Seahorse



Jellyfish



Starfish



Blue Whale

* Grey color & Black color available

eRider No.	YL-MSH0	YL-MSF0	YL-MCO0	YL-MJF0
Voltage	24V	36V	36V NEW	36V
Configurations	7S4P	10S3P	10S3P	10S4P
Rate	8.8Ah - 14.0Ah	6.75Ah - 10.5Ah	6.6Ah - 10.5Ah	8.8Ah - 14.0Ah
Weight (kg)	1.72	1.88	1.75	2.33
Dimensions (mm)	110 (L) x 75 (W) x 175 (H)	110 (L) x 75 (W) x 213 (H)	110 (L) x 75 (W) x 171 (H)	123 (L) x 92 (W) x 180 (H)

eRider No.	YL-MBWO	
Voltage	36V	48V NEW
Configurations	10S4P	13S3P
Rate	8.8Ah - 14.0Ah	6.6Ah - 10.5Ah
Weight (kg)	2.4	2.2
Dimensions (mm)	104 (L) x 74 (W) x 245 (H)	123 (L) x 92 (W) x 180 (H)



Connection Options:



Option A: Welding
Dimensions (mm):
94.2 (L) x 80.2 (W) x 59.6 (H)



Option C: Welding - with Controller Box Base
Dimensions (mm):
117.3 (L) x 94.2 (W) x 59.6 (H)



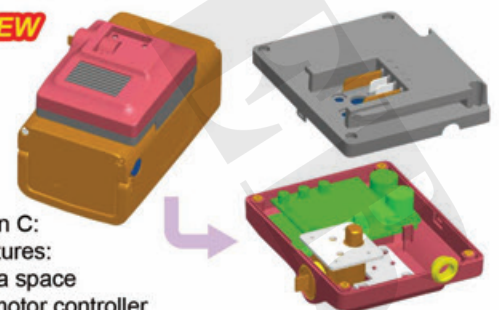
Option B: Clipping
Dimensions (mm):
94.2 (L) x 80.2 (W) x 101.0 (H)



Option D: Clipping - with Controller Box Base
Dimensions (mm):
117.3 (L) x 94.2 (W) x 101.0 (H)



NEW



Option C:
Features:
Extra space
for motor controller

Mini-fit Battery Packs

Fangbao Series



Model No.	YL-MFB0	
Voltage	24V	36V
Configurations	7S4P	10S3P
Rate/Watt Hour	8.8Ah/211Wh - 14.0Ah/336Wh	6.6Ah/238Wh - 10.5Ah/378Wh
Weight (kg)	1.72	1.75
Dimensions (mm)	201 (L) x 90 (W) x 117.5 (H)	201 (L) x 90 (W) x 117.5 (H)

Features:
With controller space

Base Dimensions (mm):
113 (L) x 87 (W) x 50 (H)



Seat Post Battery Packs

Armour & Whitebait Series



Armour I



Armour II



Whitebait I



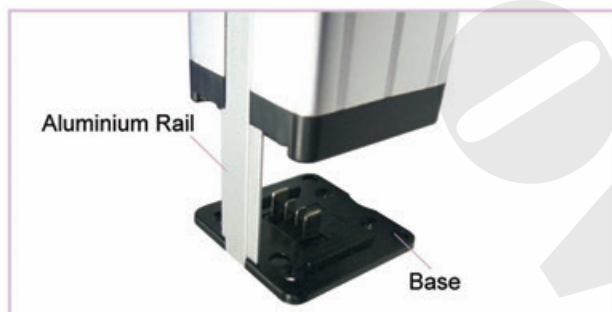
Whitebait III



Whitebait IV

* Silver color & Black color available

Model No.	YL-SAR1	YL-SAR2	YL-SWB1	YL-SWB3	YL-SWB4
Voltage	24V	36V	36V	48V	48V
Configurations	7S4P	10S4P	10S5P	13S5P	13S6P
Rate/Watt Hour	8.8Ah/211Wh - 14.0Ah/336Wh	8.8Ah/317Wh - 14.0Ah/504Wh	11.0Ah/396Wh - 17.5Ah/630Wh	11.0Ah/528Wh - 17.5Ah/840Wh	6.6Ah/277Wh - 10.5Ah/441Wh
Weight (kg)	2.01	2.66	3.25	4.09	4.69
Dimensions (mm)	89 (L) x 87 (W) x 232 (H)	89 (L) x 87 (W) x 289 (H)	89 (L) x 87 (W) x 395 (H)	93 (L) x 90 (W) x 420 (H)	111 (L) x 87 (W) x 484 (H)

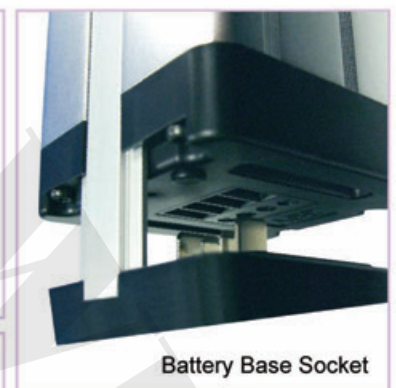


Aluminium Rail

Base

KL24H97 / KL36H97 /
KLH3615 / KLH4805 Base
Dimensions (mm):
86 (L) x 84 (W) x 35 (H)

KLH4806 Base
Dimensions (mm):
107 (L) x 76 (W) x 35 (H)



Battery Base Socket



Features:

- Strong and Portable Casing - Aluminum tube with ABS Plastic Cover.
- Designed with Aluminium Rail and Battery Base Socket to ensure quick and proper battery installation.

Seat Post Battery Packs

Sakura Series



Model No.	WY-SSA2
Voltage	36V
Configurations	10S3P
Rate/Watt Hour	6.6Ah/238Wh - 10.5Ah/378Wh



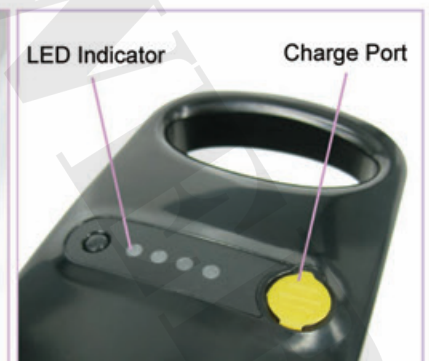
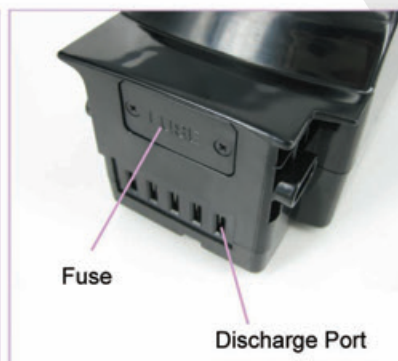
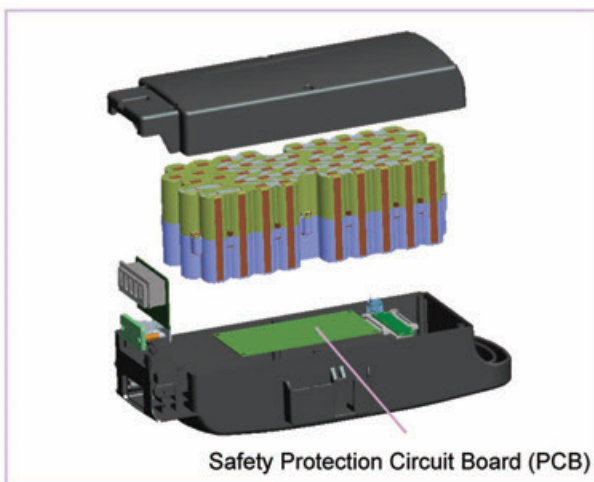
Seat Post Battery Packs

Ant Series



Base Dimensions (mm):
140 (L) x 136 (W) x 98 (L)

Model No.	YL-SAN0	
Voltage	24V	24V
Configurations	7S5P	7S4P
Rate/Watt Hour	11.0Ah/264Wh - 17.5Ah/420Wh	8.8Ah/211Wh - 14.0Ah/336Wh
Weight (kg)	2.38	2.94
Dimensions (mm)	104.7 (L) x 301 (H)	104.7 (L) x 301 (H)



Water Bottle Battery Packs

Dragonfly Series



Dragonfly I

Dragonfly II & Dragonfly III

Tube A: Ø 66 mm

Model No.	YL-WDF1	YL-WDF2	YL-WDF3
Voltage	24V	24V	36V
Configurations	7S2P	7S3P	10S2P
Rate/Watt Hour	4.4Ah/106Wh - 7.0Ah/168Wh	6.6Ah/158Wh - 10.5Ah/252Wh	4.4Ah/158Wh - 7.0Ah/252Wh
Weight (kg)	0.99	1.43	1.38
Dimensions (mm)	Ø 66 x 220 (H)	Ø 66 x 289 (H)	Ø 66 x 289 (H)



Water Bottle Battery Packs

Sky Bull Series



Sky Bull I

Sky Bull II

Tube C: Ø 92 mm			Tube C: Ø 85 mm	
Model No.	YL-WSB1		Model No.	YL-WSB2
Voltage	36V	48V NEW	Voltage	42V
Configurations	10S4P	13S3P	Configurations	12S3P
Rate/Watt Hour	8.8Ah/317Wh - 14.0Ah/504Wh	6.6Ah/317Wh - 10.5Ah/504Wh	Rate/Watt Hour	6.6Ah/277Wh - 10.5Ah/441Wh
Weight (kg)	2.34	2.2	Weight (kg)	2.21
Dimensions (mm)	Ø 91.8 x 289 (H)	Ø 91.8 x 311 (H)	Dimensions (mm)	Ø 85 x 285 (H)



YL-WSB1 Base Dimensions (mm):
345.1 (L) x 100.0 (W) x 65.8 (H)



YL-WSB1 With Controller Box Base
Dimensions (mm):
362.1 (L) x 112.3 (W) x 112.3 (H)



YL-WSB2 Base Dimensions (mm):
334.5 (L) x 81.6 (W) x 78.0 (H)



Water Bottle Battery Packs

Dongche II Series



Model No.	SS-WDC2	
Voltage	36V	48V
Configurations	10S4P	13S3P
Rate/Watt Hour	8.8Ah/317Wh - 14.0Ah/504Wh	6.6Ah/317Wh - 10.5Ah/504Wh



Water Bottle Battery Packs

Scarab Series



Scarab I & Scarab III

Scarab II & Scarab IV

Tube B: Ø 81.5 mm

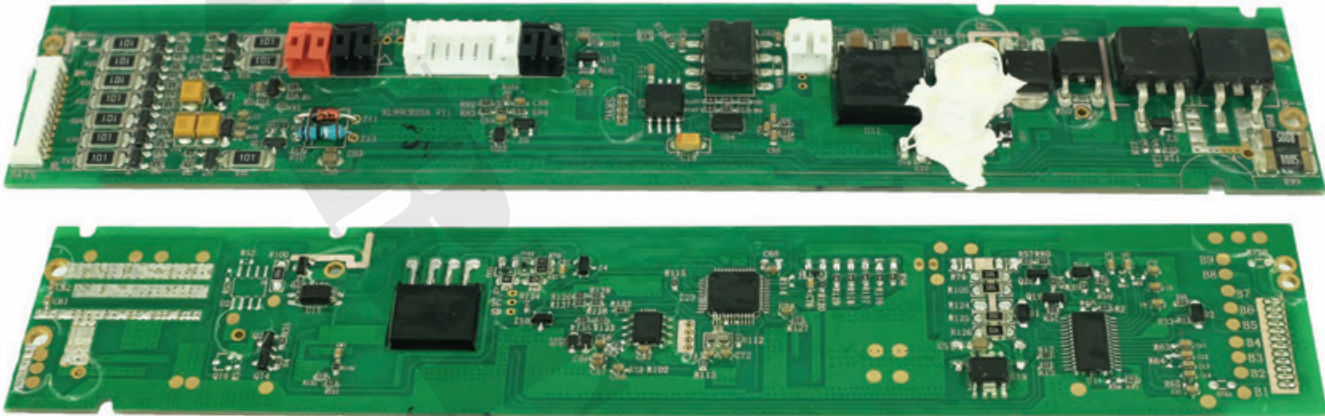
Model No.	YL-WSC1	YL-WSC3	YL-WSC2	YL-WSC4
Voltage	24V	36V	24V	36V
Configurations	7S3P	10S2P	7S4P	10S3P
Rate/Watt Hour	6.6Ah/158Wh - 10.5Ah/252Wh	4.4Ah/158Wh - 7.0Ah/252Wh	8.8Ah/211Wh - 14.0Ah/336Wh	6.6Ah/238Wh - 10.5Ah/378Wh
Weight (kg)	1.39	1.33	1.81	1.76
Dimensions (mm)	Ø 81.5 x 220 (H)	Ø 81.5 x 220 (H)	Ø 81.5 x 289 (H)	Ø 81.5 x 289 (H)



Li-ion Battery Pack Featuring Reliable Designs

1. Intelligent Protection Circuit Module provides:

- Cell Balancing
- Over-Charge Protection
- Short Circuit Protection
- Secondary Protection
- Over-Discharge Protection
- Communication Protocol
- Temperature Protection
- Over-Current Protection



Protection Circuit Module (PCM) Coated with Water-proof Plastic Layer

2. Water & Dust Resistant of Protection Circuit Module (PCM)

A layer of water-proof plastic coating has been applied to prevent damages of the Protection Circuit Module (PCM) to be caused by both water and dust. The level of ingress protection reaches IP65[×], i.e. the PCM is well protected even the battery pack is sank into water.

[×] IP65 of the Ingress Protection Rating System – the higher the number, the better protection.

IP	Means Ingress Protection System (with a 2-digit rating).
6	The first digit (IP6_) relates to ingress protection against solid objects; and '6' means dust tight, i.e. no ingress of dust.
5	The second digit (IP_5) relates to ingress protection against water; and '5' means protected against water jets, i.e. water projected from a nozzle (6.3mm) against the enclosure from any direction shall have no harmful effect.

3. Automatic Sleep Mode:

Sleep Mode shuts off the output of the battery pack automatically to prevent it from complete discharge during prolonged storage or inactivity.

Option A:

If the battery is activated for more than **16 hours[×]**, the battery circuit will automatically turn off its output.

Option B:

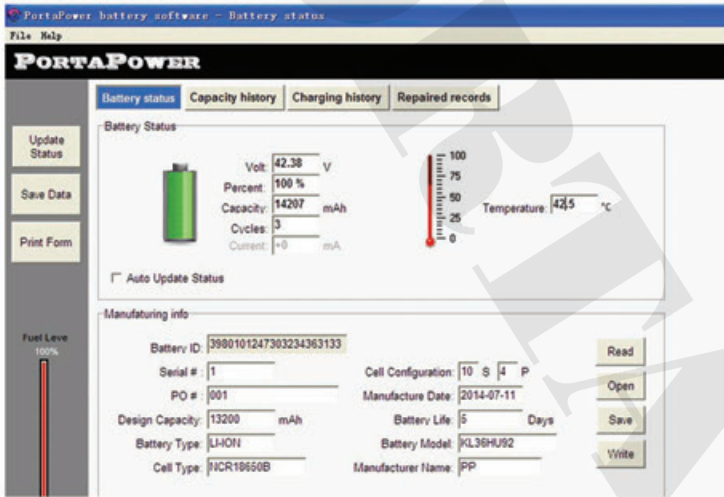
If the battery output is under 4A current, the battery circuit will automatically turn off its output after **1 hour[×]**.

[×] May adjust the activation time of the Sleep Mode to suit the needs of different clients.

Battery Read-out by UART Protocol

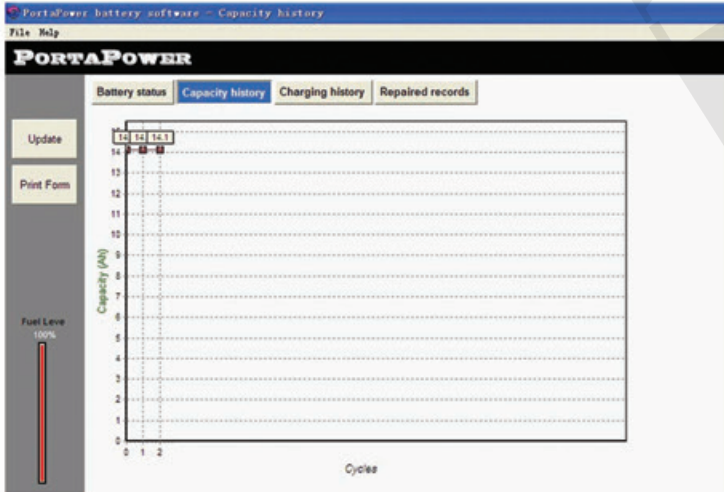


Model: KL36HU92



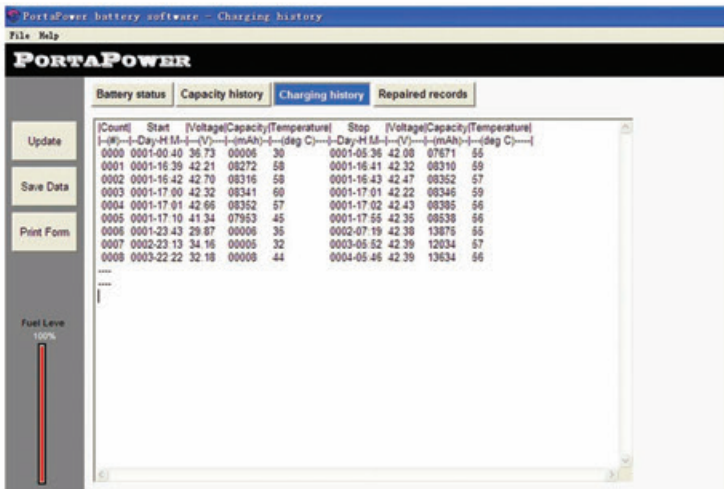
Battery Status Read-out

- Connect the data collector to the PC with an USB cable.
- Start the software program.
- All battery data will be shown, such as battery voltage, capacity, temperature, and cell configurations, etc.



Battery Capacity History Read-out

- A maximum of 500 discharging cycles in record.
- Discharge curve and data are printable.



Battery Charging History Read-out

- A maximum of 500 charging cycles in record.
- Charging records could be saved in .txt file and printed.

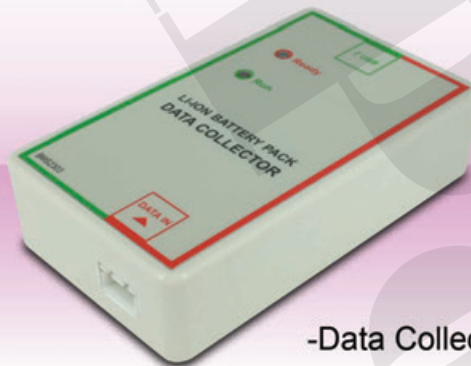
Li-ion Battery Pack Featuring Reliable Designs



4. Built-in Gas Gauge IC

The protection circuit board with build-in Gas Gauge IC monitors battery status and enables data output to various data collectors, by means of HDQ protocol, UART protocol or Canbus protocol.

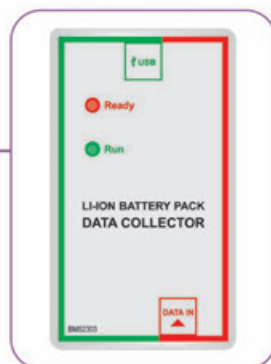
Battery Data	HDQ Protocol	UART Protocol	Canbus Protocol
Cell Type	✓	✓	✓
Cell Configurations	✓	✓	✓
Battery Type	✓	✓	✓
Battery Model	—	✓	✓
Voltage	✓	✓	✓
Rate	✓	✓	✓
Temperature	✓	✓	✓
Total Number of Cycles	✓	✓	✓
Battery Life	—	✓	✓
Battery Serial No.	—	✓	✓
Manufacturer Name	—	✓	✓
Manufacturer Data	—	✓	✓
500 Times of Discharge History	—	✓	✓
500 Times of Charge History	—	✓	✓
Repair History	—	✓	✓



-Data Collector



Smart Lithium Battery



Data Collector



Read by PC with Specialized Monitoring Software



Read by LCD Panel

Designed specifically for engineering testing. User can collect the battery data with the **LI-ION BATTERY PACK DATA COLLECTOR**; and all the data will be shown on the screen / PC.

Battery Discharge Current Specifications

In order to choose a suitable battery for your vehicle at best, high discharge current is also available according to various specifications in the market.

Fitting Product Model Code: KLHxxxx / KLHxxSxx / KLxxHxx / KLxxHSxx							
Cell Brand	Cell Model	Cell Code	Configurations	Rate (Ah)	Maximum Discharge Current*		
					Continue	10 mins	5s
Panasonic	UR18650AA	082	3P	6.75	10A	13A	18A
			4P or above	≥8.7	15A	18A	35A
	NCR18650PF	089 / 809	2P	5.8	10A	13A	18A
			3P	8.7	13A	15A	25A
		804	4P or above	>8.7	15A	18A	35A
			3P	10.2	10A	13A	18A
	NCR18650B	804	4P or above	>10.2	15A	18A	35A
			3P	10.5	10A	13A	18A
	NCR18650GA	906	4P or above	>10.5	15A	18A	35A
			3P	10.5	10A	13A	18A
YLE	INR18650D260	826	3P	6.6	10A	13A	18A
			4P or above	≥8.8	15A	18A	35A
	NCR18650D290	89D	2P	5.8	10A	13A	18A
			3P	8.7	13A	15A	25A
		89D	4P or above	≥8.7	15A	18A	35A
			3P	10.5	10A	13A	18A
Samsung	ICR18650-26J	806	3P	6.6	10A	13A	18A
			4P or above	≥8.8	15A	18A	35A
	INR18650-35E	916	3P	10.5	10A	13A	18A
			4P or above	>10.5	15A	18A	35A

* Maximum discharge current value is subject to change.
Please refer to the respective specification sheet of different products for the most updated details.

Extra Information KL Product Model Code Structure

High Discharge Current Version
e.g. KL24HU94B.803

KL	24	H	U	94	B	.803
KL = eBike Battery	24 = Voltage	H = High Discharge Current	U = UART Protocol	94 = Serial No.	B = Black Color	803 = Cell Code

e.g. KL36HS92G.089

KL	36	H	S	92	G	.089
KL = eBike Battery	36 = Voltage	H = High Discharge Current	S = HDQ Protocol	92 = Serial No.	G = Gery Color	089 = Cell Code

High Discharge & High Charge Current Version (uses 200W Charger)
e.g. KLH48S05S.083

KL	H	48	S	05	S	.083
KL = eBike Battery	H = High Discharge Current & High Charge Current	48 = Voltage	S = HDQ Protocol	05 = Serial No.	S = Silver Color	083 = Cell Code

Electric Bicycle Accessories

Battery Chargers

Specifications: Choice of 7 different input plugs for AC chargers



American Type

Australian Type

British Type

European Type

Israel Type

Japanese Type

Switzerland Type



Specifications: Choice of 6 different DC output plugs



Specifications: Choice of 7 different DC output plugs



Specifications: Choice of 7 different DC output plugs

60W Charger

Model	ACK2804N	ACK4201N	C060L0701	C060L1001
Battery Voltage	24V	36V	24V	36V
AC Input	100 - 240V			
Frequency	47 - 63Hz			
DC Output	29.4V	42.0V	29.4V	42.0V
Charging Current	Max.1.5A	Max.1.35A	Max.1.5A	Max.1.35A
Power	Max.60W			
Dimensions	115 (L) x 58 (W) x 31 (H) mm			
Certifications	CE, UL, GS, SAA & RCM		CE, FCC	

80W Charger

Model	CF080L0702	CF080L1018	CF080L1020
Battery Voltage	24V	36V	36V
AC Input	100 - 240V		
Frequency	47 - 63Hz		
DC Output	29.4V	42.0V	42.0V
Charging Current	Max.2A	Max.2A	Max.2A
Power	Max.80W		
Dimensions	141.5 (L) x 60.5 (W) x 33.6 (H) mm		
Certifications	CE, FCC		CE, FCC, UL, SAA, PSE

80W Charger

Model	CM080L1002 NEW
Battery Voltage	36V
AC Input	100 - 240V
Frequency	50 - 60Hz
DC Output	42.0V
Charging Current	Max.2A
Power	Max.84W
Dimensions	147.0 (L) x 65.5 (W) x 34.2 (H) mm
Certifications	CE, FCC, KC, GS, RCM, UL



Specifications: Choice of 7 different DC output plugs



Specifications: Choice of 7 different DC output plugs



Specifications: Choice of 7 different DC output plugs

100W Charger

Model	CP100L0702	CP100L1002	CP100L1302
Battery Voltage	24V	36V	48V
AC Input	100 - 240V		
Frequency	50 - 60Hz		
DC Output	29.4V	42.0V	54.6V
Charging Current	Max.2.5A	Max.2.5A	Max.1.8A
Power	Max.100W		
Dimensions	168.5 (L) x 64.8 (W) x 39.2 (H) mm		
Certifications	CE, FCC		

160W Charger

Model	CM160L1004 NEW
Battery Voltage	36V
AC Input	100 - 240V
Frequency	50 - 60Hz
DC Output	42.0V
Charging Current	Max.4A
Power	Max.168W
Dimensions	179.0 (L) x 80.0 (W) x 37.0 (H) mm
Certifications	CE, FCC, KC, RCM, GS

250W Charger

Model	CM250L1006 NEW
Battery Voltage	36V
AC Input	100 - 240V
Frequency	50 - 60Hz
DC Output	42.0V
Charging Current	Max.6A
Power	Max.250W
Dimensions	219.8 (L) x 105.8 (W) x 48.9 (H) mm
Certifications	CE, FCC

ELECTRIC MOTORCYCLE BATTERY TYPES



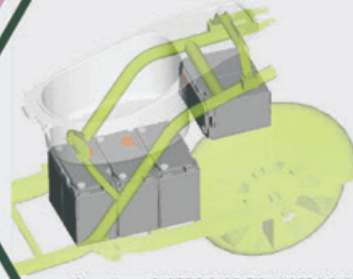
MEET U NEEDS

Electric Motorcycle
Battery Types

Electric Motorcycle Battery & Internal Battery Management Systems (BMS)



48V

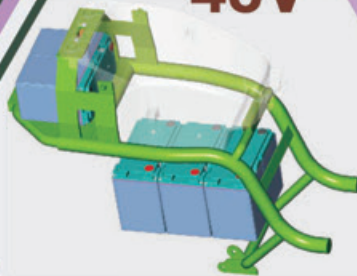


4 sets of 12V / 40Ah (48V / 40Ah) Lithium Battery Pack, connecting to an Internal BMS

48V Battery System
Combination: 4S1P
4 sets of 12V / 40Ah Lithium Battery Pack, connected to a 48V / 40Ah Internal BMS



48V



4 sets of 12V / 40Ah (48V / 40Ah) Lithium Battery Pack, connecting to an Internal BMS

48V Battery System
Combination: 4S1P
4 sets of 12V / 40Ah Lithium Battery Pack, connected to a 48V / 40Ah Internal BMS



60V



5 sets of 12V / 40Ah (60V / 40Ah) Lithium Battery Pack, connecting to an Internal BMS

60V Battery System
Combination: 5S1P
5 sets of 12V / 40Ah Lithium Battery Pack, connected to a 60V / 40Ah Internal BMS

Plug-and-Run Battery Management System (BMS) For eMotorcycles



LCD Instrumentation

Lithium Battery Packs



Motor Controller

DC Hub Motor



- Accommodate up to 3 lithium battery packs.
- Each pack can operate independently.
- BMS to command switching automatically from one used up battery to another one for supplying power continuously.

LCD Instrumentation

The BMS controller analyzes performance of both the batteries and motorcycle with data shown on the LCD display panel.



Battery Charging Status



Current Speed



Manual Mode



Battery Capacity



Battery Error



Battery Temperature Warning



Total Distance Travelled



Estimated Range Available

High-Power Lithium Battery Packs For Plug-and-Run Battery System only



- High Capacity and High Discharge Current
- LCD state of charge indicator
- Customized Size (capacity based)
- Strong and Portable Aluminum Casing
- Suitable for a wide range of applications



Discharge time and capacity are recorded and shown on LCD Panel.

Product Code	KL48BC09S.906	KL54B09S.906	KL60BC09S.906
Configurations	NCR18650GA-14S10P	NCR18650GA-15S9P	NCR18650GA-18S8P
Cell Type	Li-ion		Li-ion
Voltage	48V		60V
Rate	35Ah	31.5Ah	28Ah
Power	1680Wh	1512Wh	1680Wh
Dimensions (mm)	346 (L) x 212 (W) x 84.5 (H)		430 (L) x 212 (W) x 84.5 (H)
Max. Cont. Discharge*	60A		60A
Max. Pulse Discharge*	100A (20 sec.)		100A (20 sec.)

* Maximum discharge current value is subject to change. Please refer to the respective specification sheet of different products for the most updated details.

Independent Use High-Power Lithium Battery Chargers



-500W Charger



-1200W Charger

Input	115V~60hz 6A max. or 230V~50Hz 3A max.
Output	14.4V - 75.5V $\overline{=}$ 15A max.
Power (W)	Max. 500
Dimensions (mm)	185 (L) x 155 (W) x 90 (H)
Weight (kg)	2

Input	100V~240V 50-60Hz 17A max.
Output	14.4V - 75.5V $\overline{=}$ 20A max.
Power (W)	Max. 1200
Dimensions (mm)	185 (L) x 155 (W) x 90 (H)
Weight (kg)	3



Choose the right charger and DC output plug according to the battery voltage.

ELECTRIC WHEELCHAIR & SCOOTER BATTERY TYPES



MEET U NEEDS

**Electric Wheelchair &
Scooter Battery Types**

24V Lithium Battery System For Electric Wheelchairs



Model No.	KL24H97	KL24H27
Voltage	24V	24V
Configurations	7S4P	7S4P
Rate	8.8Ah - 14.0Ah	8.8Ah - 14.0Ah
Cont. Discharge Current*	15A	15A
Weight (kg)	2.01	1.81
Dimensions (mm)	89 (L) x 87 (W) x 232 (H)	Ø 81.5 x 289 (H)

* Maximum discharge current value is subject to change. Please refer to the respective specification sheet of different products for the most updated details.



For Wheelchairs

24V Lithium Battery System For Electric Wheelchairs



Model No.	KL24H94
Voltage	24V
Configurations	7S4P
Rate	8.8Ah - 14.0Ah
Cont. Discharge Current*	15A
Weight (kg)	1.77
Dimensions (mm)	148 (L) x 56 (W) x 249 (H)





* Maximum discharge current value is subject to change. Please refer to the respective specification sheet of different products for the most updated details.



For Wheelchairs

24V Lithium Battery System For Electric Wheelchairs & Scooters



	Product Code	Configurations	Cell Type	Voltage	Rate	Power	Max. Discharge Current*		
	HL24S17B.906	NCR18650GA-7S8P	Li-ion	24V	28Ah	672Wh	Cont.	Pluse (20s)	Protect
	Product Code	Configurations	Cell Type	Voltage	Rate	Power	Max. Discharge Current*		
	HL24S33B.906	NCR18650GA-7S14P	Li-ion	24V	52.5Ah	1260Wh	40A	50A	58A
	Product Code	Configurations	Cell Type	Voltage	Rate	Power	Max. Discharge Current*		
	HL24S55B.906	NCR18650GA-7S21P	Li-ion	24V	73.5Ah	1764Wh	40A	50A	58A
	Product Code	Configurations	Cell Type	Voltage	Rate	Power	Max. Discharge Current*		
	HL24S54B.906	NCR18650GA-7S22P	Li-ion	24V	77Ah	1848Wh	60A	70A	100A

* Maximum discharge current value is subject to change.
Please refer to the respective specification sheet of different products for the most updated details.



EQUIPMENT

MEET U NEEDS

Equipment



Rechargeable Battery Analyzers



AN04 is a multi-channel charge & discharge analyzer for a wide range of rechargeable batteries up to 100V, with discharge power up to 500W / Channel. AN03 is a single channel charge & discharge analyzer and has all the same functions as AN04. Its maximum discharge current is 20A.



- AN04 (16 Channels)



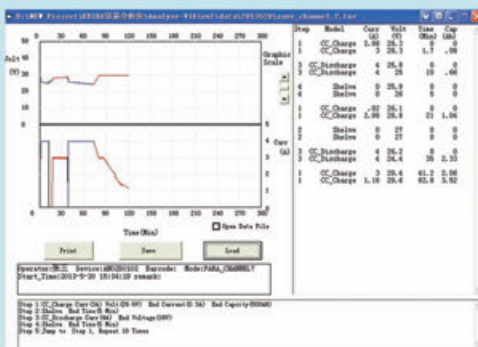
- AN03 (1 Channel)



- ▶ Merges the charge and discharge ports at the same location. An integrated system for discharging, charging and aging test consecutively as programmed, supporting internal / external charging.
- ▶ Scans barcode to link analyzed results with database.
- ▶ It also has a modularized structure for easy upgrade, maintenance and enhancement of production efficiency.



▶ Designed for various rechargeable batteries such as Li-ion, Li-Co, Li-Mn, Ni-MH, and Ni-CD, etc.



Test results could be:

- ▶ Displayed on screen
- ▶ Stored electronically
- ▶ Generated in graphic curves
- ▶ Printed as report
- ▶ Uploaded by PQTS system



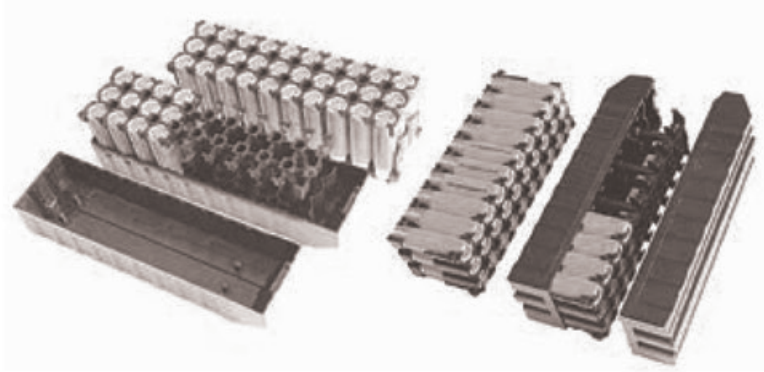
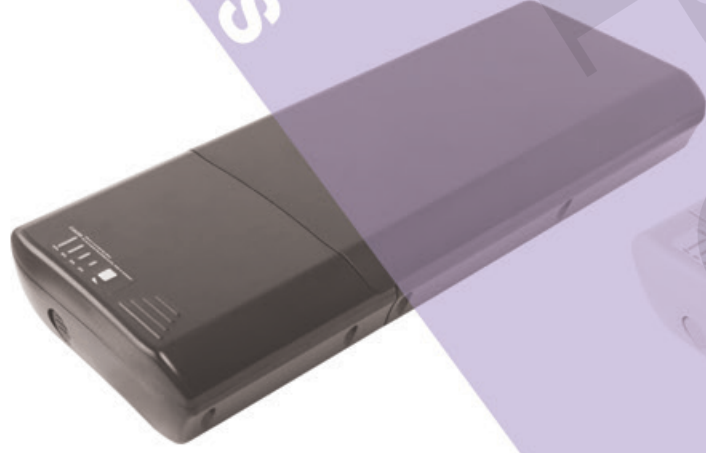
Scans barcode to upload / download analyzed results to / from database.

Specifications (Each Channel)

		Parameters	Range	Margin of Error
Charge	Use Built-in Charger	Voltage	8.4 ~ 54.6V	20mV
		Current	0 ~ 4A	2mA
		Power	0 ~ 250W	/
Discharge	Limited Current / Constant Current Discharge Mode	Voltage	0 ~ 100V	20mV
		Current	0 ~ 12A	4mA
		Power	0 ~ 500W	/

**Battery Case
Accessories**

MEET U NEEDS



Battery Case Accessories

Battery Case Accessories - Cell Holders



Battery Case Accessories - Nickel Plates

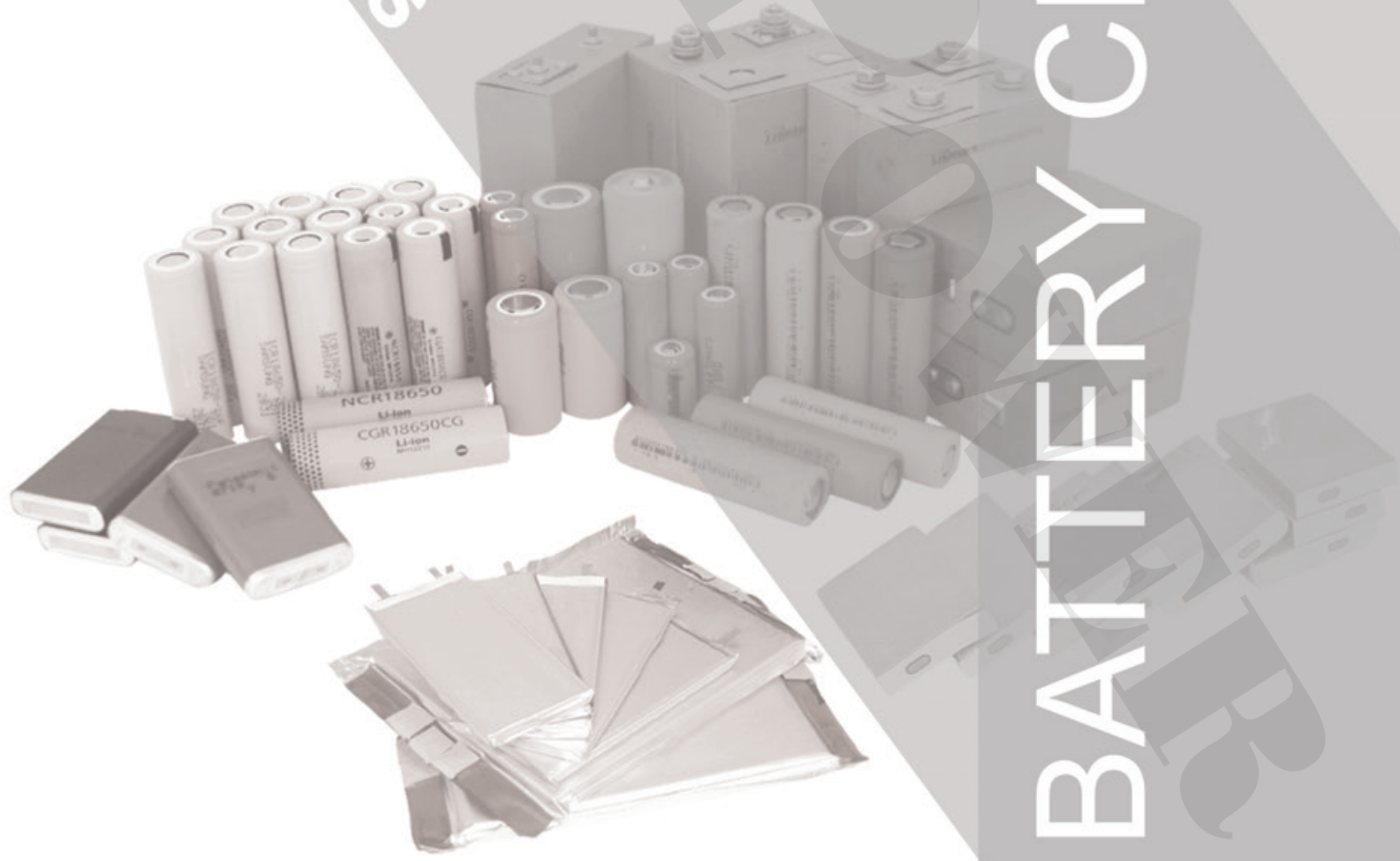


Over thousands nickel plates available



Battery Cells

MEET U NEEDS



BATTERY CELLS

JAPAN and KOREA Cells

We are the Authorized Assembler of **Panasonic** and **Samsung** of high power consumption battery packs.



Brand		Panasonic	Panasonic	Panasonic	Panasonic	Samsung	Samsung	Samsung	Samsung
Model		UR18650AA	NCR18650PF	NCR18650B	NCR18650GA	ICR18650-26J	INR18650-29E	INR18650-35E	INR21700-50E
Chemistry		Li-ion	Li-ion	Li-ion	Li-ion	Li-ion	Li-ion	Li-ion	Li-ion
Nominal Voltage		3.6V	3.6V	3.6V	3.6V	3.7V	3.6V	3.6V	3.6V
Minimum Rate		2150mAh	2750mAh	3250mAh	3350mAh	2550mAh	2750mAh	3250mAh	4750mAh
Typical Rate		2250mAh	2900mAh	3350mAh	3450mAh	2600mAh	2850mAh	3350mAh	4900mAh
Internal Impedance		≤ 100mΩ	≤ 35mΩ	≤ 48mΩ	≤ 38mΩ	≤ 100mΩ	≤ 100mΩ	≤ 35mΩ	≤ 15mΩ
Charge	Method	CV/CC**	CV/CC**	CV/CC**	CV/CC**	CV/CC**	CV/CC**	CV/CC**	CV/CC**
	Voltage	4.2V	4.2V	4.2V	4.2V	4.2V	4.2V	4.2V	4.2V
	Standard Current	1.50A	1.35A	1.62A	1.67A	1.3A	1.37A	1.7A	2.45A
	Rapid Current	2.15A	1.35A	3.4A	1.67A	2.6A	2.75A	2A	4.9A
Discharge*	Cut-off Voltage	2.75V	2.5V	2.5V	2.5V	2.75V	2.5V	2.65V	2.5V
	Constant Current	5A	10A	4.9A	10A	5.2A	8.25A	8A	9.8A
Dimensions	Diameter	Ø18.3 mm	Ø18.6mm	Ø18.5 mm	Ø18.5 mm	Ø18.4mm	Ø18.4 mm	Ø18.55 mm	Ø20.25 mm
	Height	64.9mm	65.2mm	65.3mm	65.1mm	65mm	65mm	65.25mm	70.8mm
Approx. Weight		42.2g	44.5g	47.5g	49.5g	45g	45g	50g	69g

* Maximum discharge current value is subject to change. Please refer to the respective specification sheet of different products for the most updated details.

** CC/CV = Constant Current/Constant Voltage

CHINA Cells

Partnered with **YikLik Energy Limited (YLE)**, battery cell manufacturer, we have successfully produced high-quality Li-ion and Li-polymer cells of LiCoO₂, LiNMC and LiFePO₄ chemistries. They are now being used in the making of battery packs for eBikes, eMotorcycles, Electric Wheelchairs, Electric Golf Carts, Car Starter Batteries, UPS Systems, Lightings, Household Appliances, Remote Control Toys, and many others.

YLE



YLE	YLE	YLE	YLE	YLE	YLE	Brand	
INR18650D220	INR18650D260 D	INR18650D290 D	NCR18650D350 D	INR18650D200 GT	INR18650D250 D	Model	
NCA	NCA	NCA	NCA	NCA	Li-NMC	Chemistry	
3.6V	3.6V	3.6V	3.6V	3.6V	3.6V	Nominal Voltage	
2150mAh	2550mAh	2800mAh	3300mAh	1950mAh	2450mAh	Minimum Rate	
2200mAh	2600mAh	2900mAh	3450mAh	2000mAh	2500mAh	Typical Rate	
≤ 25mΩ	≤ 25mΩ	≤ 25mΩ	≤ 35mΩ	≤ 18mΩ	≤ 25mΩ	Internal Impedance	
CV/CC**	CV/CC**	CV/CC**	CV/CC**	CV/CC**	CV/CC**	Method	Charge
4.2V	4.2V	4.2V	4.2V	4.2V	4.2V	Voltage	
2.75V	2.75V	2.5V	2.5V	2.75V	2.75V	Cut-off Voltage	Discharge*
10A	10A	10A	10A	20A	20A	Constant Current	
Ø18.4 mm	Ø18.4 mm	Ø18.4 mm	Ø18.4 mm	Ø18.5mm	Ø18.4 mm	Diameter	Dimensions
65.2mm	65.2mm	65.2mm	65.2mm	65.3mm	65.2mm	Height	
45g	47g	49g	49g	43g	47g	Approx. Weight	

* Maximum discharge current value is subject to change. Please refer to the respective specification sheet of different products for the most updated details.

** CC/CV = Constant Current/Constant Voltage

CHINA Cells

Partnered with **YikLik Energy Limited (YLE)**, battery cell manufacturer, we have successfully produced high-quality Li-ion and Li-polymer cells of LiCoO₂, LiNMC and LiFePO₄ chemistries. They are now being used in the making of battery packs for eBikes, eMotorcycles, Electric Wheelchairs, Electric Golf Carts, Car Starter Batteries, UPS Systems, Lightings, Household Appliances, Remote Control Toys, and many others.

YLE

For 18650:

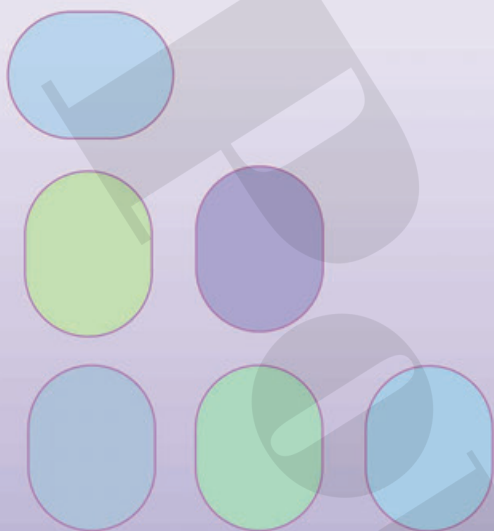
Model	Nominal Voltage	Minimum Rate	Typical Rate	Internal Impedance	Charge		Discharge*		Dimensions	
					Method	Voltage	Cut-off Voltage	Constant Current	Diameter	Height
INR18650A260 A	3.6V	2550mAh	2600mAh	≤ 48mΩ	CV/CC**	4.2V	2.75V	5A	Ø18.4 mm	65.2mm
INR18650D130E T	3.6V	1250mAh	1300mAh	≤ 18mΩ	CV/CC**	4.2V	2.75V	26A	Ø18.4 mm	65.3mm
INR18650D150 GT	3.6V	1450mAh	1500mAh	≤ 18mΩ	CV/CC**	4.2V	2.75V	20A	Ø18.5 mm	65.3mm
NCR18650A300 A	3.6V	2950mAh	3000mAh	≤ 48mΩ	CV/CC**	4.2V	2.5V	6A	Ø18.4 mm	65.2mm
NCR18650A335 A	3.6V	3250mAh	3350mAh	≤ 45mΩ	CV/CC**	4.2V	2.5V	6A	Ø18.4 mm	65.2mm
NCR18650A320 A	3.6V	3100mAh	3200mAh	≤ 45mΩ	CV/CC**	4.2V	2.5V	6A	Ø18.4 mm	65.2mm
NCR18650D250 ET	3.6V	2450mAh	2500mAh	≤ 25mΩ	CV/CC**	4.2V	2.5V	15A	Ø18.4 mm	65.2mm
NCR18650D300 ET	3.6V	2900mAh	3000mAh	≤ 20mΩ	CV/CC**	4.2V	2.5V	15A	Ø18.4 mm	65.2mm
NCR18650D320 D	3.6V	3100mAh	3200mAh	≤ 35mΩ	CV/CC**	4.2V	2.5V	10A	Ø18.4 mm	65.2mm

For Others:

Model	Nominal Voltage	Minimum Rate	Typical Rate	Internal Impedance	Charge		Discharge*		Dimensions	
					Method	Voltage	Cut-off Voltage	Constant Current	Diameter	Height
INR14300A52 A	3.6V	490mAh	520mAh	≤ 90mΩ	CV/CC**	4.2V	2.75V	1A	Ø14.3 mm	30.2mm
INR14430A75	3.6V	710mAh	750mAh	≤ 85mΩ	CV/CC**	4.2V	2.75V	2A	Ø14.3 mm	42.7mm
INR14430A80 A	3.6V	760mAh	800mAh	≤ 80mΩ	CV/CC**	4.2V	2.75V	2A	Ø14.3 mm	42.7mm
NCR14430A92 A	3.6V	880mAh	920mAh	≤ 80mΩ	CV/CC**	4.2V	2.5V	2A	Ø14.3 mm	42.7mm
INR14500A80	3.6V	750mAh	800mAh	≤ 85mΩ	CV/CC**	4.2V	2.75V	2A	Ø14.2 mm	50.0mm
INR14500A95 A	3.6V	900mAh	950mAh	≤ 75mΩ	CV/CC**	4.2V	2.75V	2A	Ø14.2 mm	49.0mm
INR16300A65	3.6V	620mAh	650mAh	≤ 85mΩ	CV/CC**	4.2V	2.75V	1.3A	Ø16.5 mm	30.0mm
INR16300D65 A	3.6V	620mAh	650mAh	≤ 75mΩ	CV/CC**	4.2V	2.75V	5A	Ø16.5 mm	30.0mm
INR16340A82 A	3.6V	780mAh	820mAh	≤ 85mΩ	CV/CC**	4.2V	2.75V	2A	Ø16.5 mm	33.5mm
INR16340A82 AJ	3.6V	780mAh	820mAh	≤ 85mΩ	CV/CC**	4.2V	2.75V	2A	Ø16.5 mm	34.1mm
INR18350D82 AJ	3.6V	780mAh	820mAh	≤ 30mΩ	CV/CC**	4.2V	2.75V	8A	Ø18.4 mm	35.2mm
INR18500A160 A	3.6V	1600mAh	1700mAh	≤ 60mΩ	CV/CC**	4.2V	2.75V	3.4A	Ø18.4 mm	48.8mm
INR26650A500	3.6V	4800mAh	5000mAh	≤ 35mΩ	CV/CC**	4.2V	2.75V	10A	Ø26.3 mm	65.2mm
NCR10380D40 A	3.6V	380mAh	400mAh	≤ 85mΩ	CV/CC**	4.2V	2.5V	1A	Ø10.2 mm	37.7mm
NCR10380D40 AJ	3.6V	380mAh	400mAh	≤ 85mΩ	CV/CC**	4.2V	2.5V	1A	Ø10.2 mm	38.2mm
NCR10430D45 A	3.6V	420mAh	450mAh	≤ 70mΩ	CV/CC**	4.2V	2.5V	1A	Ø10.2 mm	42.4mm
NCR10430D45 AJ	3.6V	420mAh	450mAh	≤ 70mΩ	CV/CC**	4.2V	2.5V	1A	Ø10.2 mm	42.4mm
NCR10500D50 A	3.6V	470mAh	500mAh	≤ 65mΩ	CV/CC**	4.2V	2.5V	1A	Ø10.2 mm	50.2mm
NCR10500D50 AJ	3.6V	470mAh	500mAh	≤ 65mΩ	CV/CC**	4.2V	2.5V	1A	Ø10.2 mm	50.2mm
NCR14250A52 A	3.6V	490mAh	520mAh	≤ 100mΩ	CV/CC**	4.2V	2.5V	1A	Ø14.3 mm	25.2mm
NCR14500A105 A	3.6V	1000mAh	1050mAh	≤ 75mΩ	CV/CC**	4.2V	2.5V	2A	Ø14.2 mm	49.0mm
NCR18500A204 A	3.6V	1940mAh	2040mAh	≤ 60mΩ	CV/CC**	4.2V	2.5V	4A	Ø18.4 mm	48.8mm
NCR18500A225 A	3.6V	2150mAh	2250mAh	≤ 60mΩ	CV/CC**	4.2V	2.5V	4A	Ø18.4 mm	48.8mm

* Maximum discharge current value is subject to change. Please refer to the respective specification sheet of different products for the most updated details.

** CC/CV = Constant Current/Constant Voltage



MEET U NEEDS

Energy Solution Provider



蔡惠雨 Yu Choi
Tel:+8614715345934

HONG KONG HEADQUARTERS:

PORTAPower (China) Limited

Flat 1003, 10/F., Hopeful Factory Centre,
10-16 Wo Shing St., Fotan, N.T., Hong Kong
Tel: (852) 2687 6323; Fax: (852) 2687 6312
Website: <http://www.portapower.com>

SERVICE CENTRE:

Silver Centre GmbH

Am Treptower Park 28-30 (Huas D2),
12345 Berlin, Germany

GUANGDONG FACTORY:

Guangzhou Zhanhui Electronics Co., Ltd.

No.320, Shinan Road, Guantan, Dongchong,
Nansha District, Guangzhou, P. C.: 511453
Tel: (86) 020-6680 4228; Fax: (86) 020-6680 4229

HUNAN FACTORY:

Changde Yik Lik Energy Limited

Anxiang County Industrial Area,
Changde City, Hunan, P. C.: 415600
Tel: (86) 0736-433 8338; Fax: (86) 0736-433 8333
Website: <http://www.yiklik.com>

